



2025
**PRODUCT
CATALOG**



AirMedia®

Bring clean, convenient connectivity to the table

AM-3000-WF-I

AirMedia® Receiver 3000 with Wi-Fi® Network Connectivity, International



The AirMedia® Receiver 3000 (AM-3000-WF-I) enables secure wireless collaboration in the modern digital workspace. Easy to deploy and manage, install the Receiver in conference rooms, huddle rooms, lounges, lobbies, or almost any space to establish a productive meeting environment.

AM-3100-WF-I

AirMedia® Receiver 3100 with Wi-Fi® Network Connectivity, International



The AirMedia® Receiver 3100 (AM-3100-WF-I) enables secure wireless collaboration in the modern digital workspace. Easy to deploy and manage, install the Receiver in conference rooms, huddle rooms, lounges, lobbies, or almost any space to establish a productive meeting environment.

AM3-111-I KIT

AirMedia® Series 3 Kit with AM-3100-WF Receiver and AM-TX3-100 Adaptor, International



The AM3-111-I KIT enables secure wireless collaboration in the modern digital workspace. The system contains an AirMedia Series 3 Receiver (AM-3100-WF-I) and an AirMedia Connect Adaptor (AM-TX3-100-I). The AM3-111-I KIT is easy to deploy and manage, and it can be installed in conference rooms, huddle rooms, lounges, lobbies, or almost any space to establish a productive meeting environment.

AM-3200

AirMedia® Receiver 3200



The AirMedia® Receiver 3200 (AM-3200) enables secure wireless collaboration in the modern digital workspace. Easy to deploy and manage, install the Receiver in conference rooms, huddle rooms, lounges, lobbies, or almost any space to establish a productive meeting environment.

AM-3200-GV

AirMedia® Receiver 3200, Government Version



The AirMedia® Receiver 3200, Government Version (AM-3200-GV) enables secure wireless collaboration in the modern digital workspace. Easy to deploy and manage, install the Receiver in conference rooms, huddle rooms, lounges, lobbies, or almost any space to establish a productive meeting environment. The AM-3200-GV is a fully featured TAA-compliant AM-3200 that is suitable for government deployments.

AM-3200-WF-I

AirMedia® Receiver 3200 with Wi-Fi® Network Connectivity, International



The AirMedia® Receiver 3200 (AM-3200-WF-I) enables secure wireless collaboration in the modern digital workspace. Easy to deploy and manage, install the Receiver in conference rooms, huddle rooms, lounges, lobbies, or almost any space to establish a productive meeting environment.

AM3-212-I KIT

AirMedia® Series 3 Kit with AM-3200-WF Receiver, two AM-TX3-100 Adaptors, and Cradle, International



The AM3-212-I KIT enables secure wireless collaboration in the modern digital workspace. The system contains an AirMedia Series 3 Receiver (AM-3200-WF-I), two AirMedia Connect Adaptors (AM-TX3-100-I), and a tabletop cradle for up to four AM-TX3-100 adaptors (AM-TX3-100-CRADLE). The AM3-212-I KIT is easy to deploy and manage, and it can be installed in huddle rooms, lounges, lobbies, or almost any space to establish a productive meeting environment.

AM-3000-WF-I

AirMedia® Receiver 3000 with Wi-Fi® Network Connectivity, International



The AirMedia® Receiver 3000 (AM-3000-WF-I) enables secure wireless collaboration in the modern digital workspace. Easy to deploy and manage, install the Receiver in conference rooms, huddle rooms, lounges, lobbies, or almost any space to establish a productive meeting environment.

AM-TX3-200

AirMedia® Series 3 Connect Endpoint



The AirMedia® Series 3 Connect Endpoint (AM-TX3-200) enables wireless presentation and conferencing¹ when paired with a Wi-Fi® network capable AirMedia Series 3 Receiver. Deploy the AM-TX3-200 alongside a compatible AirMedia receiver in conference rooms, huddle spaces, classrooms, or almost any space to establish a productive meeting or learning environment.

AM-TX3-100-I

AirMedia® Series 3 Connect Adaptor, International



The AirMedia® Connect Adaptor (AM-TX3-100-I) enables wireless presentation and conferencing¹ when paired with a Wi-Fi® network capable AirMedia Series 3 Receiver. Deploy the AM-TX3-100-I alongside an AirMedia Series 3 Receiver in conference rooms, huddle rooms, lounges, lobbies, or almost any space to establish a productive meeting environment.



CEN-ODT-C-POE

Dual-Technology Occupancy Sensor, PoE, 2,000 Sq Ft

The Crestron® CEN-ODT-C-POE is a low-profile, ceiling-mounted occupancy sensor that features passive infrared (PIR) and ultrasonic (US) motion detection technology.

The CEN-ODT-C-POE is designed for areas up to 2,000 square feet, making it great for use in large spaces such as auditoriums, warehouses, and building lobbies. It is an effective solution for reducing energy consumption and enhancing the functionality of lighting and environmental systems.

Crestron FlipTops

Cable Management Solution

FT2-1200-ELEC-PTL-AL

FlipTop™ FT2 Series Cable Management System, 1200 Size, Electrical, Pass-Through Lid, Alloy



A simple modular tabletop connectivity solution for conference tables and presentation lecterns. Highly configurable using drop-in modules. Backlit symbol icons illuminate to identify connection types in a darkened room.

Provides nine module slots arranged in one row of nine. Accepts a choice of pass-through cables, one-touch cable retractors, gravity cable retractors, active connector plates, keystone connector plates, USB rapid chargers, and international AC power outlets.

FT2-1200-ELEC-PTL-B

FlipTop™ FT2 Series Cable Management System, 1200 Size, Electrical, Pass-Through Lid, Black



A simple modular tabletop connectivity solution for conference tables and presentation lecterns. Highly configurable using drop-in modules. Backlit symbol icons illuminate to identify connection types in a darkened room.

Provides nine module slots arranged in one row of nine. Accepts a choice of pass-through cables, one-touch cable retractors, gravity cable retractors, active connector plates, keystone connector plates, USB rapid chargers, and international AC power outlets.

AM3-111-I KIT

AirMedia® Series 3 Kit with AM-3100-WF Receiver and AM-TX3-100 Adaptor, International



A simple modular tabletop connectivity solution for conference tables and presentation lecterns. Highly configurable using drop-in modules.

Provides nine module slots arranged in one row of nine. Accepts a choice of pass-through cables, gravity cable retractors, keystone connector plates, and international AC power outlets.

FT2-1200-MECH-PTL-B

FlipTop™ FT2 Series Cable Management System, 1200 Size, Mechanical, Pass-Through Lid, Black



A simple modular tabletop connectivity solution for conference tables and presentation lecterns. Highly configurable using drop-in modules.

Provides nine module slots arranged in one row of nine. Accepts a choice of pass-through cables, gravity cable retractors, keystone connector plates, and international AC power outlets.

FT2-1400-ELEC-PTL-AL

FlipTop™ FT2 Series Cable Management System, 1400 Size, Electrical, Pass-Through Lid, Alloy



A simple modular tabletop connectivity solution for conference tables and presentation lecterns. Highly configurable using drop-in modules. Backlit symbol icons illuminate to identify connection types in a darkened room.

Provides eighteen module slots arranged in two rows of nine. Accepts a choice of pass-through cables, one-touch cable retractors, gravity cable retractors, active connector plates, keystone connector plates, USB rapid chargers, and international AC power outlets.

FT2-1400-ELEC-PTL-B

FlipTop™ FT2 Series Cable Management System, 1400 Size, Electrical, Pass-Through Lid, Black



A simple modular tabletop connectivity solution for conference tables and presentation lecterns. Highly configurable using drop-in modules. Backlit symbol icons illuminate to identify connection types in a darkened room.

Provides eighteen module slots arranged in two rows of nine. Accepts a choice of pass-through cables, one-touch cable retractors, gravity cable retractors, active connector plates, keystone connector plates, USB rapid chargers, and international AC power outlets.

FT2-1400-MECH-PTL-AL

FlipTop™ FT2 Series Cable Management System, 1400 Size, Electrical, Pass-Through Lid, Alloy



A simple modular tabletop connectivity solution for conference tables and presentation lecterns. Highly configurable using drop-in modules.

Provides eighteen module slots arranged in two rows of nine. Accepts a choice of pass-through cables, gravity cable retractors, keystone connector plates, and international AC power outlets.

FT2-1400-MECH-PTL-B

FlipTop™ FT2 Series Cable Management System, 1400 Size, Mechanical, Pass-Through Lid, Black



A simple modular tabletop connectivity solution for conference tables and presentation lecterns. Highly configurable using drop-in modules.

Provides eighteen module slots arranged in two rows of nine. Accepts a choice of pass-through cables, gravity cable retractors, keystone connector plates, and international AC power outlets.

FT2-202-ELEC-PTL-AL

FlipTop™ FT2 Series Cable Management System, 202 Size, Electrical, Pass-Through Lid, Alloy



A simple modular tabletop connectivity solution for conference tables and presentation lecterns. Highly configurable using drop-in modules. Backlit symbol icons illuminate to identify connection types in a darkened room.

Provides six module slots arranged in one row of six. Accepts a choice of pass-through cables, one-touch cable retractors, gravity cable retractors, active connector plates, keystone connector plates, USB rapid chargers, and international AC power outlets.

FT2-202-ELEC-PTL-B

FlipTop™ FT2 Series Cable Management System, 202 Size, Electrical, Pass-Through Lid, Black



A simple modular tabletop connectivity solution for conference tables and presentation lecterns. Highly configurable using drop-in modules. Backlit symbol icons illuminate to identify connection types in a darkened room.

Provides six module slots arranged in one row of six. Accepts a choice of pass-through cables, one-touch cable retractors, gravity cable retractors, active connector plates, keystone connector plates, USB rapid chargers, and international AC power outlets.

FT2-202-MECH-PTL-AL

FlipTop™ FT2 Series Cable Management System, 202 Size, Mechanical, Pass-Through Lid, Alloy



A simple modular tabletop connectivity solution for conference tables and presentation lecterns. Highly configurable using drop-in modules. Backlit symbol icons illuminate to identify connection types in a darkened room.

Provides six module slots arranged in one row of six. Accepts a choice of pass-through cables, one-touch cable retractors, gravity cable retractors, active connector plates, keystone connector plates, USB rapid chargers, and international AC power outlets.

FT2-202-MECH-PTL-B

FlipTop™ FT2 Series Cable Management System, 202 Size, Mechanical, Pass-Through Lid, Black



A simple modular tabletop connectivity solution for conference tables and presentation lecterns. Highly configurable using drop-in modules.

Provides six module slots arranged in one row of six. Accepts a choice of pass-through cables, gravity cable retractors, keystone connector plates, and international AC power outlets.

FT2-202-ELEC-PTL-B

FlipTop™ FT2 Series Cable Management System, 202 Size, Electrical, Pass-Through Lid, Black



A simple modular tabletop connectivity solution for conference tables and presentation lecterns. Highly configurable using drop-in modules. Backlit symbol icons illuminate to identify connection types in a darkened room.

Provides six module slots arranged in one row of six. Accepts a choice of pass-through cables, one-touch cable retractors, gravity cable retractors, active connector plates, keystone connector plates, USB rapid chargers, and international AC power outlets.

FT2-500-ELEC-PTL-AL

FlipTop™ FT2 Series Cable Management System, 500 Size, Electrical, Pass-Through Lid, Alloy



A simple modular tabletop connectivity solution for conference tables and presentation lecterns. Highly configurable using drop-in modules. Backlit symbol icons illuminate to identify connection types in a darkened room.

Provides eight module slots arranged in two rows of four. Accepts a choice of pass-through cables, one-touch cable retractors, gravity cable retractors, active connector plates, keystone connector plates, USB rapid chargers, and international AC power outlets.

FT2-500-ELEC-PTL-B

FlipTop™ FT2 Series Cable Management System, 500 Size, Electrical, Pass-Through Lid, Black



A simple modular tabletop connectivity solution for conference tables and presentation lecterns. Highly configurable using drop-in modules. Backlit symbol icons illuminate to identify connection types in a darkened room.

Provides eight module slots arranged in two rows of four. Accepts a choice of pass-through cables, one-touch cable retractors, gravity cable retractors, active connector plates, keystone connector plates, USB rapid chargers, and international AC power outlets.

FT2-500-MECH-PTL-AL

FlipTop™ FT2 Series Cable Management System, 500 Size, Mechanical, Pass-Through Lid, Alloy



A simple modular tabletop connectivity solution for conference tables and presentation lecterns. Highly configurable using drop-in modules.

Provides eight module slots arranged in two rows of four. Accepts a choice of pass-through cables, gravity cable retractors, keystone connector plates, and international AC power outlets.

FT2-500-MECH-PTL-B

FlipTop™ FT2 Series Cable Management System, 500 Size, Mechanical, Pass-Through Lid, Black



A simple modular tabletop connectivity solution for conference tables and presentation lecterns. Highly configurable using drop-in modules.

Provides eight module slots arranged in two rows of four. Accepts a choice of pass-through cables, gravity cable retractors, keystone connector plates, and international AC power outlets.

FT2-700-ELEC-PTL-AL

FlipTop™ FT2 Series Cable Management System, 700 Size, Electrical, Pass-Through Lid, Alloy

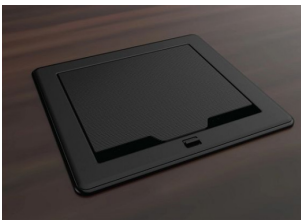


A simple modular tabletop connectivity solution for conference tables and presentation lecterns. Highly configurable using drop-in modules. Backlit symbol icons illuminate to identify connection types in a darkened room.

Provides twelve module slots arranged in two rows of six. Accepts a choice of pass-through cables, one-touch cable retractors, gravity cable retractors, active connector plates, keystone connector plates, USB rapid chargers, and international AC power outlets.

FT2-700-ELEC-PTL-B

FlipTop™ FT2 Series Cable Management System, 700 Size, Electrical, Pass-Through Lid, Black

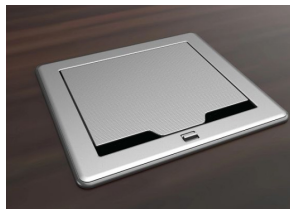


A simple modular tabletop connectivity solution for conference tables and presentation lecterns. Highly configurable using drop-in modules. Backlit symbol icons illuminate to identify connection types in a darkened room.

Provides twelve module slots arranged in two rows of six. Accepts a choice of pass-through cables, one-touch cable retractors, gravity cable retractors, active connector plates, keystone connector plates, USB rapid chargers, and international AC power outlets.

FT2-700-MECH-PTL-AL

FlipTop™ FT2 Series Cable Management System, 700 Size, Mechanical, Pass-Through Lid, Alloy



A simple modular tabletop connectivity solution for conference tables and presentation lecterns. Highly configurable using drop-in modules.

Provides twelve module slots arranged in two rows of six. Accepts a choice of pass-through cables, gravity cable retractors, keystone connector plates, and international AC power outlets.

FT2-700-MECH-PTL-B

FlipTop™ FT2 Series Cable Management System, 700 Size, Mechanical, Pass-Through Lid, Black



A simple modular tabletop connectivity solution for conference tables and presentation lecterns. Highly configurable using drop-in modules.

Provides twelve module slots arranged in two rows of six. Accepts a choice of pass-through cables, gravity cable retractors, keystone connector plates, and international AC power outlets.

FT2-700-ELEC-PTL-B

FlipTop™ FT2 Series Cable Management System, 700 Size, Electrical, Pass-Through Lid, Black



A simple modular tabletop connectivity solution for conference tables and presentation lecterns. Highly configurable using drop-in modules. Backlit symbol icons illuminate to identify connection types in a darkened room.

Provides twelve module slots arranged in two rows of six. Accepts a choice of pass-through cables, one-touch cable retractors, gravity cable retractors, active connector plates, keystone connector plates, USB rapid chargers, and international AC power outlets.

FT2A-CBL-PT-4K-DP

Pass-Through Cable for FT2 Series, DisplayPort™ to HDMI®, 18 Gbps, 8 ft (2.4 m)



Provides a rugged, high-performance interface cable purpose-built for use with Crestron® FT2 Series FlipTop™ cable management systems. Each cable installs in the FlipTop assembly using a cable pass-through plate module, which allows the cable to be pulled out smoothly for use, and then dropped back into the FlipTop when done. Pass-through cables and plates offer an affordable alternative to cable retractors.

FT2A-CBL-PT-4K-DP-HD

Pass-Through Cable for FT2 Series, DisplayPort™ to HDMI®, 18 Gbps, 8 ft (2.4 m)



Provides a rugged, high-performance interface cable purpose-built for use with Crestron® FT2 Series FlipTop™ cable management systems. Each cable installs in the FlipTop assembly using a cable pass-through plate module, which allows the cable to be pulled out smoothly for use, and then dropped back into the FlipTop when done. Pass-through cables and plates offer an affordable alternative to cable retractors.

FT2A-CBL-PT-4K-HD

Pass-Through Cable for FT2 Series, HDMI® to HDMI, 18 Gbps, 8 ft (2.4 m)



Provides a rugged, high-performance interface cable purpose-built for use with Crestron® FT2 Series FlipTop™ cable management systems. Each cable installs in the FlipTop assembly using a cable pass-through plate module, which allows the cable to be pulled out smoothly for use, and then dropped back into the FlipTop when done. Pass-through cables and plates offer an affordable alternative to cable retractors.

FT2A-CBL-PT-4K-MDP-DP

Pass-Through Cable for FT2 Series, Mini DisplayPort™ to DisplayPort, 18 Gbps, 8 ft (2.4 m)



Provides a rugged, high-performance interface cable purpose-built for use with Crestron® FT2 Series FlipTop™ cable management systems. Each cable installs in the FlipTop assembly using a cable pass-through plate module, which allows the cable to be pulled out smoothly for use, and then dropped back into the FlipTop when done. Pass-through cables and plates offer an affordable alternative to cable retractors.

FT2A-CBL-PT-4K-MDP-HD

Pass-Through Cable for FT2 Series, Mini DisplayPort™ to HDMI®, 18 Gbps, 8 ft (2.4 m)



Provides a rugged, high-performance interface cable purpose-built for use with Crestron® FT2 Series FlipTop™ cable management systems. Each cable installs in the FlipTop assembly using a cable pass-through plate module, which allows the cable to be pulled out smoothly for use, and then dropped back into the FlipTop when done. Pass-through cables and plates offer an affordable alternative to cable retractors.

FT2A-CBL-PT-4K-USBC-HD

FlipTop™ FT2 Series Cable Management System, 700 Size, Electrical, Pass-Through Lid, Black



Provides a rugged, high-performance interface cable purpose-built for use with Crestron® FT2 Series FlipTop™ cable management systems. Each cable installs in the FlipTop assembly using a cable pass-through plate module, which allows the cable to be pulled out smoothly for use, and then dropped back into the FlipTop when done. Pass-through cables and plates offer an affordable alternative to cable retractors.

FT2A-CBL-PT-AUD

Pass-Through Cable for FT2 Series, 3.5mm Mini-TRS Plug to 3.5mm Mini-TRS Plug, Stereo Audio, 8 ft (2.4 m)



Provides a rugged, high-performance interface cable purpose-built for use with Crestron® FT2 Series FlipTop™ cable management systems. Each cable installs in the FlipTop assembly using a cable pass-through plate module, which allows the cable to be pulled out smoothly for use, and then dropped back into the FlipTop when done. Pass-through cables and plates offer an affordable alternative to cable retractors.

FT2A-CBL-PT-CAT6

Pass-Through Cable for FT2 Series, RJ-45 to RJ-45, CAT6, 8 ft (2.4 m)



Provides a rugged, high-performance interface cable purpose-built for use with Crestron® FT2 Series FlipTop™ cable management systems. Each cable installs in the FlipTop assembly using a cable pass-through plate module, which allows the cable to be pulled out smoothly for use, and then dropped back into the FlipTop when done. Pass-through cables and plates offer an affordable alternative to cable retractors.

FT2A-CBL-PT-USB

Pass-Through Cable for FT2 Series, USB-A to USB-B, USB 2.0, 8 ft (2.4 m)



Provides a rugged, high-performance interface cable purpose-built for use with Crestron® FT2 Series FlipTop™ cable management systems. Each cable installs in the FlipTop assembly using a cable pass-through plate module, which allows the cable to be pulled out smoothly for use, and then dropped back into the FlipTop when done. Pass-through cables and plates offer an affordable alternative to cable retractors.

FT2A-CBL-PT-VGA

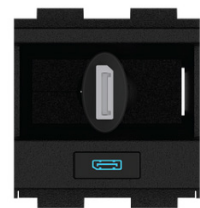
Pass-Through Cable for FT2 Series, HD15 male to HD15 male, VGA, 1080p, 8 ft (2.4 m)



Provides a rugged, high-performance interface cable purpose-built for use with Crestron® FT2 Series FlipTop™ cable management systems. Each cable installs in the FlipTop assembly using a cable pass-through plate module, which allows the cable to be pulled out smoothly for use, and then dropped back into the FlipTop when done. Pass-through cables and plates offer an affordable alternative to cable retractors.

FT2A-CBLR-1T-4K-DP-HD

One-Touch Cable Retractor for FT2 ELEC Series, DisplayPort™ to HDMI®, 18 Gbps



Provides a retractable cable management solution for Crestron® FT2 ELEC Series FlipTops™ cable management system. Features an electrically clutched, spring powered retraction mechanism, which allows each cable to pull out smoothly and then retract with the touch of a button. Ideal for applications with limited space beneath the table.

FT2A-CBLR-1T-4K-MDP-HD

One-Touch Cable Retractor for FT2 ELEC Series, DisplayPort™ to HDMI®, 18 Gbps



Provides a retractable cable management solution for Crestron® FT2 ELEC Series FlipTops™ cable management system. Features an electrically clutched, spring powered retraction mechanism, which allows each cable to pull out smoothly and then retract with the touch of a button. Ideal for applications with limited space beneath the table.

FT2A-CBLR-1T-4K-USBC-HD

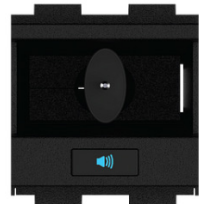
One-Touch Cable Retractor for FT2 ELEC Series, USB-C™ to HDMI®, 18 Gbps



Provides a retractable cable management solution for Crestron® FT2 ELEC Series FlipTops™ cable management system. Features an electrically clutched, spring powered retraction mechanism, which allows each cable to pull out smoothly and then retract with the touch of a button. Ideal for applications with limited space beneath the table.

FT2A-CBLR-1T-AUDIO

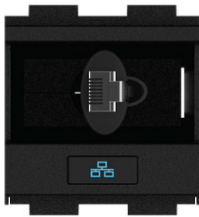
One-Touch Cable Retractor for FT2 ELEC Series, 3.5mm Mini-TRS Plug to 3.5mm Mini-TRS Plug, Stereo Audio



Provides a retractable cable management solution for Crestron® FT2 ELEC Series FlipTops™ cable management system. Features an electrically clutched, spring powered retraction mechanism, which allows each cable to pull out smoothly and then retract with the touch of a button. Ideal for applications with limited space beneath the table.

FT2A-CBLR-1T-CAT6

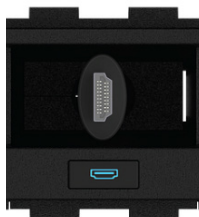
One-Touch Cable Retractor for FT2 ELEC Series, RJ-45 to RJ-45, CAT6



Provides a retractable cable management solution for Crestron® FT2 ELEC Series FlipTops™ cable management system. Features an electrically clutched, spring powered retraction mechanism, which allows each cable to pull out smoothly and then retract with the touch of a button. Ideal for applications with limited space beneath the table.

FT2A-CBLR-1T-HD

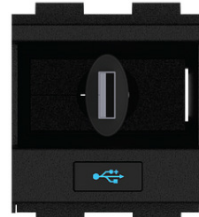
One-Touch Cable Retractor for FT2 ELEC Series, HDMI® to HDMI, 10.2 Gbps



Provides a retractable cable management solution for Crestron® FT2 ELEC Series FlipTops™ cable management system. Features an electrically clutched, spring powered retraction mechanism, which allows each cable to pull out smoothly and then retract with the touch of a button. Ideal for applications with limited space beneath the table.

FT2A-CBLR-1T-USB

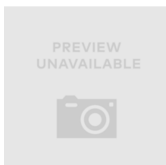
One-Touch Cable Retractor for FT2 ELEC Series, USB-A to USB-B, USB 2.0



Provides a retractable cable management solution for Crestron® FT2 ELEC Series FlipTops™ cable management system. Features an electrically clutched, spring powered retraction mechanism, which allows each cable to pull out smoothly and then retract with the touch of a button. Ideal for applications with limited space beneath the table.

FT2A-CBLR-1T-USBC-PWR

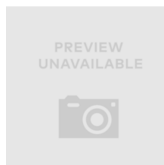
One-Touch Cable Retractor for FT2 ELEC Series, USB-C® to USB-C, 60 W



Provides a retractable cable management solution for Crestron® FT2 ELEC Series FlipTops™ cable management system. Features an electrically clutched, spring powered retraction mechanism, which allows each cable to pull out smoothly and then retract with the touch of a button. Ideal for applications with limited space beneath the table.

FT2A-CBLR-1T-VGA

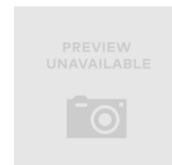
One-Touch Cable Retractor for FT2 ELEC Series, HD15 male to HD15 male, VGA, 1080p



Provides a retractable cable management solution for Crestron® FT2 ELEC Series FlipTops™ cable management system. Features an electrically clutched, spring powered retraction mechanism, which allows each cable to pull out smoothly and then retract with the touch of a button. Ideal for applications with limited space beneath the table.

FT2A-CBLR-BRKT-1200

Mid-Row Cable Retractor Adapter Bracket for FT2-1200 Series



Allows two cable retractors to be installed in the middle positions within a Crestron® FT2-1200 Series FlipTop™.

FT2A-CBLR-BRKT-1400

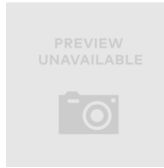
Mid-Row Cable Retractor Adapter Bracket for FT2-1400 Series



Allows two cable retractors to be installed in the middle positions of either module row within a Crestron® FT2-1400 Series FlipTop™.

FT2A-CBLR-BRKT-202

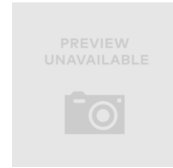
Mid-Row Cable Retractor Adapter Bracket for FT2-202 Series



Allows a single cable retractor to be installed in the middle position within a Crestron® FT2-202 Series FlipTop™.

FT2A-CBLR-BRKT-700

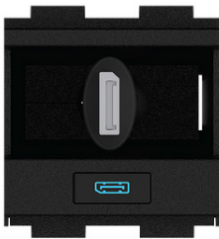
Mid-Row Cable Retractor Adapter Bracket for FT2-700 Series



Allows a single cable retractor to be installed in the middle position of either module row within a Crestron® FT2-700 Series FlipTop™.

FT2A-CBLR-GR-4K-DP

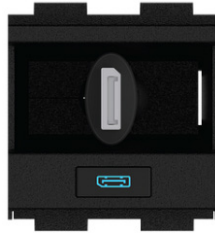
Gravity Cable Retractor for FT2 Series, DisplayPort™ to HDMI®, 18 Gbps



Provides a retractable cable management solution for Crestron® FT2 Series FlipTop™ cable management systems. Features a precision gravity-assisted track and pulley mechanism, which allows each cable to be pulled out smoothly for use, and then retracted gently when done by simply lifting the cable vertically above the FlipTop.

FT2A-CBLR-GR-4K-DP-HD

Gravity Cable Retractor for FT2 Series, DisplayPort™ to HDMI®, 18 Gbps



Provides a retractable cable management solution for Crestron® FT2 Series FlipTop™ cable management systems. Features a precision gravity-assisted track and pulley mechanism, which allows each cable to be pulled out smoothly for use, and then retracted gently when done by simply lifting the cable vertically above the FlipTop.

FT2A-CBLR-GR-4K-MDP-DP

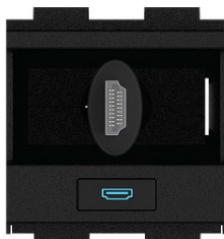
Gravity Cable Retractor for FT2 Series, Mini DisplayPort™ to DisplayPort, 18 Gbps



Provides a retractable cable management solution for Crestron® FT2 Series FlipTop™ cable management systems. Features a precision gravity-assisted track and pulley mechanism, which allows each cable to be pulled out smoothly for use, and then retracted gently when done by simply lifting the cable vertically above the FlipTop.

FT2A-CBLR-GR-4K-MDP-HD

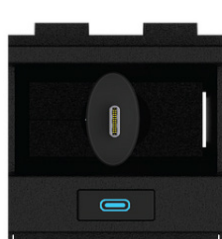
Gravity Cable Retractor for FT2 Series, HDMI® to HDMI, 18 Gbps



Provides a retractable cable management solution for Crestron® FT2 Series FlipTop™ cable management systems. Features a precision gravity-assisted track and pulley mechanism, which allows each cable to be pulled out smoothly for use, and then retracted gently when done by simply lifting the cable vertically above the FlipTop.

FT2A-CBLR-GR-4K-USBC-HD

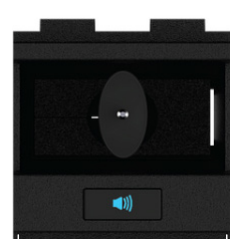
Gravity Cable Retractor for FT2 Series, USB-C® to HDMI®, 18 Gbps



Provides a retractable cable management solution for Crestron® FT2 Series FlipTop™ cable management systems. Features a precision gravity-assisted track and pulley mechanism, which allows each cable to be pulled out smoothly for use, and then retracted gently when done by simply lifting the cable vertically above the FlipTop.

FT2A-CBLR-GR-AUDIO

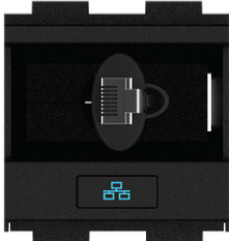
Gravity Cable Retractor for FT2 Series, 3.5mm Mini-TRS Plug to 3.5mm Mini-TRS Plug, Stereo Audio



Provides a retractable cable management solution for Crestron® FT2 Series FlipTop™ cable management systems. Features a precision gravity-assisted track and pulley mechanism, which allows each cable to be pulled out smoothly for use, and then retracted gently when done by simply lifting the cable vertically above the FlipTop.

FT2A-CBLR-GR-CAT6

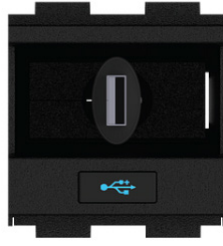
Gravity Cable Retractor for FT2 Series, RJ-45 to RJ-45, CAT6



Provides a retractable cable management solution for Crestron® FT2 Series FlipTop™ cable management systems. Features a precision gravity-assisted track and pulley mechanism, which allows each cable to be pulled out smoothly for use, and then retracted gently when done by simply lifting the cable vertically above the FlipTop.

FT2A-CBLR-GR-USB

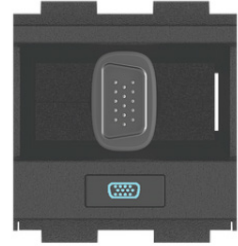
Gravity Cable Retractor for FT2 Series, USB-A to USB-B, USB 2.0, 8 ft (2.4 m)



Provides a retractable cable management solution for Crestron® FT2 Series FlipTop™ cable management systems. Features a precision gravity-assisted track and pulley mechanism, which allows each cable to be pulled out smoothly for use, and then retracted gently when done by simply lifting the cable vertically above the FlipTop.

FT2A-CBLR-GR-VGA

Gravity Cable Retractor for FT2 Series, HD15 male to HD15 male, VGA, 1080p



Provides a retractable cable management solution for Crestron® FT2 Series FlipTop™ cable management systems. Features a precision gravity-assisted track and pulley mechanism, which allows each cable to be pulled out smoothly for use, and then retracted gently when done by simply lifting the cable vertically above the FlipTop.

FT2A-CHGR-USBA/C

USB Rapid Charging Module for FT2 ELEC Series, USB Type-C & Type-A High Power Charging Ports, Bus Powered



Installs in an FT2 ELEC series FlipTop™ to enable rapid charging of a USB Type-C™ or Type-A device.

FT2A-CHGR-USBA-BASIC

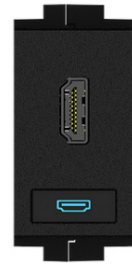
FlipTop™ USB Rapid Charging Module



Single-slot module that adds USB charging capability to an FlipTop™ cable management system. Provides two USB Type-A charging ports. Includes external 100-240V power pack. Rapid charging allows two devices to draw up to 12 W at 2.4 A simultaneously.

FT2A-CP-4K-HD

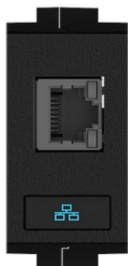
Connector Plate Module for FT2 ELEC Series, HDMI®, 18 Gbps



Provides an assortment of panel-mount connectors for a Crestron® FT2 ELEC Series FlipTop™. Enables the connection of AV sources and mobile devices using separate detachable interface cables (cables not included).

FT2A-CP-RJ45

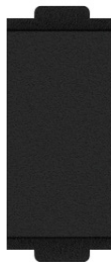
Connector Plate Module for FT2 ELEC Series, RJ45, CAT6



Provides an assortment of panel-mount connectors for a Crestron® FT2 ELEC Series FlipTop™. Enables the connection of AV sources and mobile devices using separate detachable interface cables (cables not included).

FT2A-PLT-BLANK-10

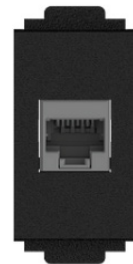
FlipTop™ FT2 Series Cable Management System Blank Plate Modules, Qty. 10



Covers for unused module slots within a Crestron® FlipTop™ FT2 Series Cable Management System. Pack of 10.

FT2A-PLT-KEY-10

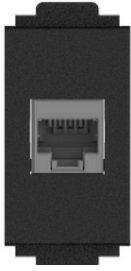
Keystone Plate Modules for FT2 Series, Qty. 10



Enables standard flush-mount keystone connectors to be installed within a Crestron® FT2 Series FlipTop™.

FT2A-PLT-KEY-10

Keystone Plate Modules for FT2 Series, Qty. 10



Enables standard flush-mount keystone connectors to be installed within a Crestron® FT2 Series FlipTop™.

FT2A-PLT-PT-10

FlipTop™ FT2 Series Cable Management System Cable Pass-Through Plate Modules, Qty. 10



Cable pass-through module plates for Crestron® FT2A-CBL-PT Series Pass-Through Cables and other interface cables. Installs in a Crestron FlipTop™ FT2 Series Cable Management System. Pack of 10.

FT2A-PWR-EU-2

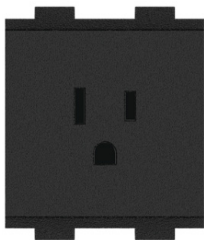
AC Power Outlet Module for FT2 Series, Dual, European "Schuko," Type F



Provides four AC power outlets within a Crestron® FT2 Series FlipTop™ for Europe, Korea, and any other countries or regions using Type F.

FT2A-PWR-JP-1-BASIC

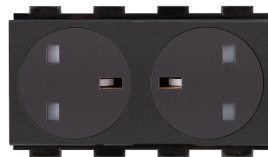
FlipTop™ AC Power Outlet Module, Single, JP NEMA® 5, Type B



Provides one AC power outlet within a Crestron® FT2 Series FlipTop™ for Japan where Type B power outlets are used.

FT2A-PWR-UK-2

AC Power Outlet Module for FT2 Series, Dual, UK Type G



Provides four AC power outlets within a Crestron® FT2 Series FlipTop™ for the United Kingdom, Singapore, Hong Kong, UAE, Saudi Arabia, and any other country using Type G.

FT2A-PWR-UN-1-BASIC

AC Power Outlet Module for FT2 Series, Single, Universal



Provides one universal AC power outlet within a Crestron® FT2 Series FlipTop™ for the US, Canada, Mexico, Europe, Japan, Korea, Singapore, Saudi Arabia, Australia, New Zealand, China, and other countries using Type B, G, or I.

FT2A-PWR-UN-2

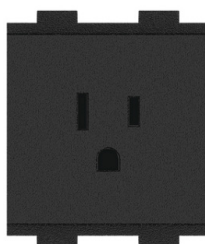
AC Power Outlet Module for FT2 Series, Dual, Universal



Provides four universal AC power outlets within a Crestron® FT2 Series FlipTop™ for the US, Canada, Mexico, Europe, Japan, Korea, Singapore, Saudi Arabia, Australia, New Zealand, China, and other countries or regions using Type B, F, G, or I.

FT2A-PWR-US-1

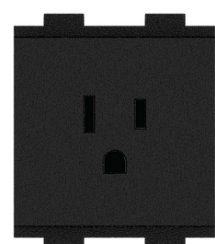
AC Power Outlet Module for FT2 Series, Single, US NEMA 5, Type B, w/2 Under-Table Outlets & Cord



Provides one or more NEMA 5 type AC power outlets within a Crestron® FT2 Series FlipTop™. For use in the U.S., Canada, Mexico, and other locales. Includes two additional outlets and attached power cord below the table.

FT2A-PWR-US-1-BASIC

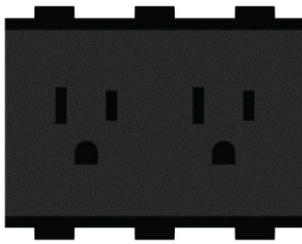
AC Power Outlet Module for FT2 Series, Single, US NEMA 5, Type B, Attached Power Cord



Provides one NEMA 5 type AC power outlet within a Crestron® FT2 Series FlipTop™. For use in the U.S., Canada, Mexico, and other locales. Includes attached AC power cord below the table.

FT2A-PWR-US-2

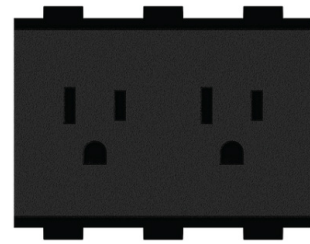
AC Power Outlet Module for FT2 Series, Dual, US NEMA 5, Type B, w/2 Under-Table Outlets & Cord



Provides one or more NEMA 5 type AC power outlets within a Crestron® FT2 Series FlipTop™. For use in the U.S., Canada, Mexico, and other locales. Includes two additional outlets and attached power cord below the table.

FT2A-PWR-US-2-BX

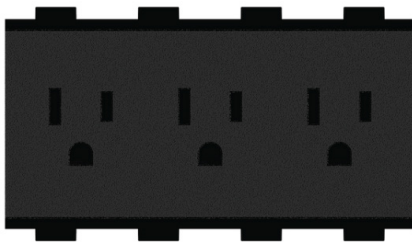
FlipTop™ AC Power Outlet Module, Dual, US NEMA® 5, Type B



Provides two AC power outlets within a Crestron® FT2 Series FlipTop™ for the US and other countries using Type B.

FT2A-PWR-US-3

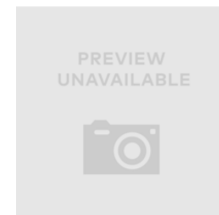
AC Power Outlet Module for FT2 Series, Triple, US NEMA 5, Type B, w/2 Under-Table Outlets & Cord



Provides one or more NEMA 5 type AC power outlets within a Crestron® FT2 Series FlipTop™. For use in the U.S., Canada, Mexico, and other locales. Includes two additional outlets and attached power cord below the table.

FT2A-SPCR-MNT-10

FlipTop™ FT2 Series Cable Management System Mounting Spacers



Mounting spacers for Crestron FT-600 and Extron® Cable Cubby® 700.



FT2A-UTK-CLOAK

Under-Table Cloak for FT2 Series Gravity Cable Retractors

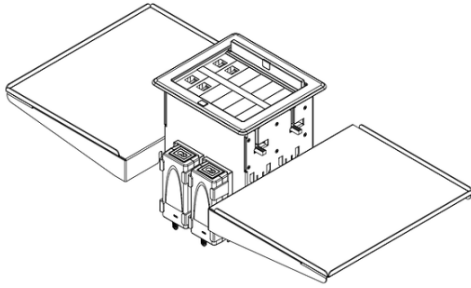
Provides discrete treatment for FT2 FlipTop™ cable management assemblies beneath the table.



FT2A-UTK-CLOAK-1T

Under-Table Cloak for FT2 Series Gravity Cable Retractors

Provides discrete treatment for FT2 FlipTop™ cable management assemblies beneath the table.



FT2A-UTK-SHELF

Under-Table Utility Shelf for FT2 Series

Provides a convenient solution for holding a DigitalMedia™ transmitter or similar device beneath the table as part of a complete Crestron® FT2 series FlipTop™ installation.



FT2A-UTK-CLOAK

Under-Table Cloak for FT2 Series Gravity Cable Retractors

Provides discrete treatment for FT2 FlipTop™ cable management assemblies beneath the table.



FT2A-UTK-CLOAK-WIDE-1T

AC Power Outlet Module for FT2 Series, Single, US NEMA 5, Type B, w/2 Under-Table Outlets & Cord

Provides discrete treatment for FT2 FlipTop™ cable management assemblies beneath the table.



FT2A-UTK-PWS

Power Supply for FT2 ELEC Series

Designed for use with a Crestron FT2 ELEC series FlipTop™. One is included with each FlipTop, and a second may be purchased as required to support installations using two USB Rapid Charging Modules.

Crestron Videobar 70



All-in-one collaboration bar

UC-B70-A-T-I

Crestron Flex Large Room Conference Solution with All-In-One Videobar 70 for Microsoft Teams® Rooms, International



The UC-B70-A-T-I Crestron Flex tabletop conferencing system provides a medium to large room video conference solution for use with Microsoft Teams® Rooms. It features a 10 in. tabletop touch screen, Crestron Videobar 70 with intelligent high-definition video and audio, a PoE injector, and cables.

UC-B70-A-Z-I

Crestron Flex Large Room Conference Solution with All-In-One Videobar 70 for Zoom Rooms® Software, International



The UC-B70-A-Z-I Crestron Flex tabletop conferencing system provides a medium to large room video conference solution for use with Zoom Rooms® software. It simplifies the communications and collaboration needs with fewer components and maximum efficiency. The UC-B70-A-Z-I features a 10 in. tabletop touch screen, Crestron Videobar 70 with intelligent high-definition video and audio, a PoE injector, and cables. The UC-B70-A-Z-I also supports up to three video displays¹ (not included).



UC-SB2-DMK

Display Mounting Kit for
Crestron Videobar 70

The UC-SB2-DMK is an optional display mounting kit for the Crestron Videobar 70. The kit includes two base bracket rails, two extension bracket rails, two tilt brackets, and one mounting bracket. These brackets are installed behind a VESA® compliant display device to mount the videobar either on the top or bottom of the display device.



Crestron Scheduling Panels

Room Optimization

TSS-1070-B-S

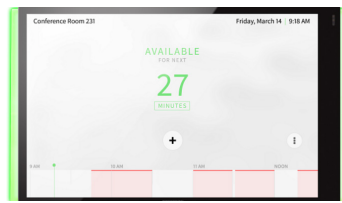
10.1 in. Room Scheduling Touch Screen, Black Smooth



A stylish and versatile wall mount touch screen designed specifically for enterprise room scheduling applications. Integrates directly with various room scheduling services. Installs quickly and easily, with simple web-based configuration and cloud-based management and requires no control system or programming.

TSS-1070-B-S-LB KIT

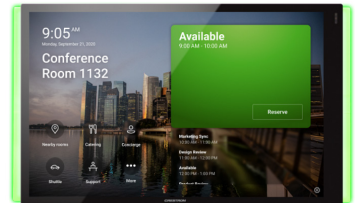
10.1 in. Room Scheduling Touch Screen, Black Smooth, includes one TSW-1070-LB-B-S light bar



A stylish and versatile wall mount touch screen designed specifically for enterprise room scheduling applications. Integrates directly with various room scheduling services. Installs quickly and easily, with simple web-based configuration and cloud-based management and requires no control system or programming.

TSS-1070-T-B-S-LB KIT

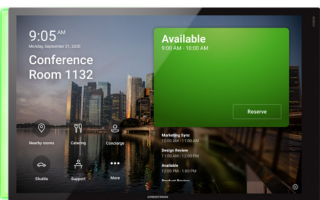
10.1 in. Room Scheduling Touch Screen for Microsoft Teams® Software, Black Smooth, includes one TSW-1070-LB-B-S light bar



A stylish and versatile wall mount touch screen designed specifically to run the Microsoft Teams® Panels scheduling application. Installs quickly and easily, with simple web-based configuration and cloud-based management and requires no control system or programming.

TSS-1070-T-B-S-LB-MNT KIT

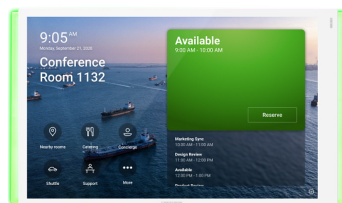
0.1 in. Room Scheduling Touch Screen for Microsoft Teams® Software, Black Smooth, includes one TSW-1070-LB-B-S light bar and one TSW-770/1070-MSMK-ANG-B-S multisurface mount kit



A stylish and versatile wall mount touch screen designed specifically to run the Microsoft Teams® Panels scheduling application. Integrates directly with additional room scheduling services. Installs quickly and easily, with simple web-based configuration and cloud-based management and requires no control system or programming.

TSS-1070-T-W-S-LB KIT

10.1 in. Room Scheduling Touch Screen for Microsoft Teams® Software, White Smooth, includes one TSW-1070-LB-W-S light bar

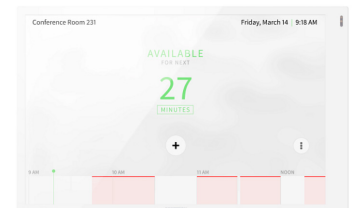


A stylish and versatile wall mount touch screen designed specifically to run the Microsoft Teams® Panels scheduling application. Installs quickly and easily, with simple web-based configuration and cloud-based management and requires no control system or programming.

Includes one TSW-1070-LB series room availability light bar with the touch screen for a complete room scheduling solution.

TSS-1070-W-S

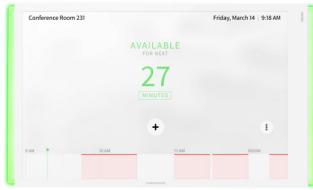
10.1 in. Room Scheduling Touch Screen, White Smooth



A stylish and versatile wall mount touch screen designed specifically for enterprise room scheduling applications. Integrates directly with various room scheduling services. Installs quickly and easily, with simple web-based configuration and cloud-based management and requires no control system or programming.

TSS-1070-W-S-LB KIT

10.1 in. Room Scheduling Touch Screen, White Smooth, includes one TSW-1070-LB-W-S light bar



A stylish and versatile wall mount touch screen designed specifically for enterprise room scheduling applications. Integrates directly with various room scheduling services. Installs quickly and easily, with simple web-based configuration and cloud-based management and requires no control system or programming.

Includes one TSW-1070-LB series room availability light bar with the touch screen for a complete room scheduling solution.

TSS-1070-Z-B-S-LB KIT

10.1 in. Room Scheduling Touch Screen for Zoom Rooms® Software, Black Smooth, includes one TSW-1070-LB-B-S light bar



A stylish and versatile wall mount touch screen designed specifically to run the Zoom Rooms® scheduling application. Integrates directly with additional room scheduling services. Installs quickly and easily, with simple web-based configuration and cloud-based management and requires no control system or programming.

TSS-1070-Z-B-S-LB-MNT KIT

10.1 in. Room Scheduling Touch Screen for Zoom Rooms® Software, Black Smooth, includes one TSW-1070-LB-B-S light bar and one TSW-770/1070-MSMK-ANG-B-S multisurface mount kit



A stylish and versatile wall mount touch screen designed specifically to run the Zoom Rooms® scheduling application. Integrates directly with additional room scheduling services. Installs quickly and easily, with simple web-based configuration and cloud-based management and requires no control system or programming.

TSS-1070-Z-W-S-LB KIT

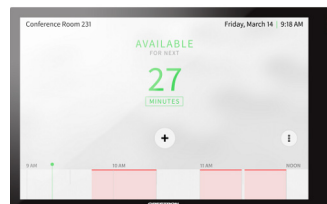
10.1 in. Room Scheduling Touch Screen for Zoom Rooms® Software, White Smooth, includes one TSW-1070-LB-W-S light bar



A stylish and versatile wall mount touch screen designed specifically to run the Zoom Rooms® scheduling application. Integrates directly with additional room scheduling services. Installs quickly and easily, with simple web-based configuration and cloud-based management and requires no control system or programming.

TSS-770-B-S

7 in. Room Scheduling Touch Screen, Black Smooth

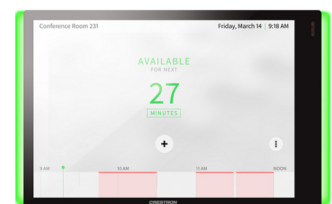


A stylish and versatile wall mount touch screen designed specifically for enterprise room scheduling applications. Integrates directly with various room scheduling services. Installs quickly and easily, with simple web-based configuration and cloud-based management and requires no control system or programming.

The TSS-770 is compatible with Wall-Smart® flush wall mounting accessories.

TSS-770-B-S-LB KIT

7 in. Room Scheduling Touch Screen, Black Smooth, includes one TSW-770-LB-B-S light bar



A stylish and versatile wall mount touch screen designed specifically for enterprise room scheduling applications. Integrates directly with various room scheduling services. Installs quickly and easily, with simple web-based configuration and cloud-based management and requires no control system or programming.

Includes one TSW-770-LB series room availability light bar with the touch screen for a complete room scheduling solution.

TSS-770-T-B-S-LB KIT

7 in. Room Scheduling Touch Screen for Microsoft Teams® Software, Black Smooth, includes one TSW-770-LB-B-S light bar

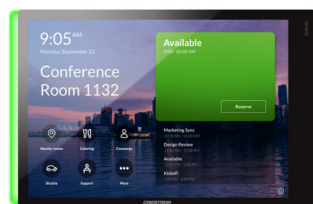


A stylish and versatile wall mount touch screen designed specifically to run the Microsoft Teams® Panels scheduling application. Installs quickly and easily, with simple web-based configuration and cloud-based management and requires no control system or programming.

Includes one TSW-770-LB series room availability light bar with the touch screen for a complete room scheduling solution.

TSS-770-T-B-S-LB-MNT KIT

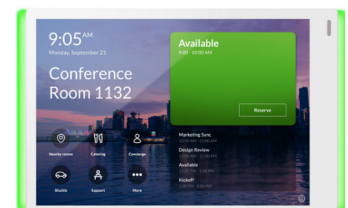
7 in. Room Scheduling Touch Screen for Microsoft Teams® Software, Black Smooth, includes one TSW-770-LB-B-S light bar and one TSW-770/1070-MSMK-ANG-B-S multisurface mount kit



A stylish and versatile wall mount touch screen designed specifically to run the Microsoft Teams® Panels scheduling application. Integrates directly with additional room scheduling services. Installs quickly and easily, with simple web-based configuration and cloud-based management and requires no control system or programming.

TSS-770-T-W-S-LB KIT

7 in. Room Scheduling Touch Screen for Microsoft Teams® Software, White Smooth, includes one TSW-770-LB-W-S light bar

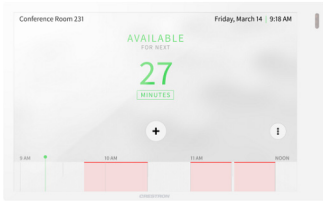


A stylish and versatile wall mount touch screen designed specifically to run the Microsoft Teams® Panels scheduling application. Installs quickly and easily, with simple web-based configuration and cloud-based management and requires no control system or programming.

Includes one TSW-770-LB series room availability light bar with the touch screen for a complete room scheduling solution.

TSS-770-W-S

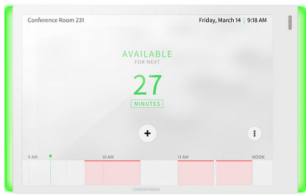
7 in. Room Scheduling Touch Screen,White Smooth



A stylish and versatile wall mount touch screen designed specifically for enterprise room scheduling applications. Integrates directly with various room scheduling services. Installs quickly and easily, with simple web-based configuration and cloud-based management and requires no control system or programming.

TSS-770-W-S-LB KIT

7 in. Room Scheduling Touch Screen, White Smooth, includes one TSW-770-LB-W-S light bar



A stylish and versatile wall mount touch screen designed specifically for enterprise room scheduling applications. Integrates directly with various room scheduling services. Installs quickly and easily, with simple web-based configuration and cloud-based management and requires no control system or programming.

Includes one TSW-770-LB series room availability light bar with the touch screen for a complete room scheduling solution.

TSS-770-Z-B-S-LB KIT

7 in. Room Scheduling Touch Screen for Zoom Rooms® Software, Black Smooth, includes one TSW-770-LB-B-S light bar



A stylish and versatile wall mount touch screen designed specifically to run the Zoom Rooms® scheduling application. Integrates directly with additional room scheduling services. Installs quickly and easily, with simple web-based configuration and cloud-based management and requires no control system or programming.

TSS-770-Z-B-S-LB-MNT KIT

7 in. Room Scheduling Touch Screen for Zoom Rooms® Software, Black Smooth, includes one TSW-770-LB-B-S light bar and one TSW-770/1070-MSMK-ANG-B-S multisurface mount kit



A stylish and versatile wall mount touch screen designed specifically to run the Zoom Rooms® scheduling application. Integrates directly with additional room scheduling services. Installs quickly and easily, with simple web-based configuration and cloud-based management and requires no control system or programming.

TSS-770-Z-W-S-LB KIT

7 in. Room Scheduling Touch Screen for Zoom Rooms® Software, White Smooth, includes one TSW-770-LB-W-S light bar



A stylish and versatile wall mount touch screen designed specifically to run the Zoom Rooms® scheduling application. Integrates directly with additional room scheduling services. Installs quickly and easily, with simple web-based configuration and cloud-based management and requires no control system or programming.



SERVICES VERSATECH OFFER

Design Consultation Services • Ocular Inspection • Current System Evaluation

CRESTRON 2025. All prices are subject to change without prior notice.

5/F Alva Business Center, 259 C. Raymundo Ave., Maybunga, Pasig City 1607, Metro Manila, Philippines. +632 5 318 7999

www.versatech.com.ph