

C2G

legrand | AV

DA-LITE

CHIEF

LUXUL

MIDDLE
ATLANTIC

VADDIO

SET THE FOUNDATION FOR
AMAZING
AV EXPERIENCES

2023-24 SPOTLIGHT PRODUCTS

AMAZING AV EXPERIENCES

WITH LEGRAND | AV

Legrand is the global specialist in electrical and digital building infrastructures. Its comprehensive offering of solutions for commercial, industrial and residential markets makes it a benchmark for customers worldwide.

In the AV space, Legrand | AV offers an extended portfolio of branded audiovisual products including flat panel mounting solutions, projector mounts, projection screens, switches routers, cabling and connectivity, equipment racks, PTZ cameras and furniture for Commercial AV markets.

Its innovative products are sold under the C2G, Chief, Da-Lite, Luxul, Middle Atlantic, and Vaddio brand names.

All brands work together to provide a breadth of product, strength of longevity, and advantage of superior customer service and support.

C2G

C2G simplifies Audio-Video and IT connectivity for commercial applications. Our solutions are innovatively designed to provide the critical features needed for the space they occupy in corporate, education, healthcare, government and other crucial environments.

CHIEF

Chief has an extensive portfolio of inspired solutions for flat panel displays, projectors, desktop monitors and other AV components. Through deep customer and end-user empathy, Chief continually strives to create amazing technology experiences.

DA-LITE

For over 100 years, Da-Lite has been designing, manufacturing and marketing the most comprehensive line of projection screens in the world. Today, we offer our widest selection ever of proprietary projection screen surfaces and materials in our history.

LUXUL

Luxul is the leading innovator of simple-to-deploy, professional-grade IP networking solutions for use by custom installation professionals. Designed for use in both residential and commercial environments, the Luxul family offers a complete line of solutions that simplify network design and deployment.

MIDDLE ATLANTIC

Middle Atlantic offers innovative system enclosures, tech-enabled furniture, power products and Wiremold cable management solutions for complete and unmatched AV system support and protection.

VADDIO

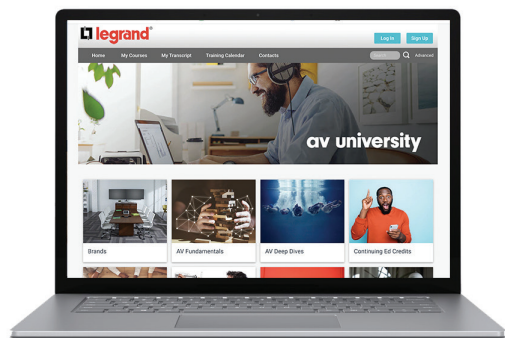
Vaddio manufactures professional quality PTZ cameras, Pro AV solutions, a full suite of Unified Communication and Collaboration systems. Combining enterprise class performance and industry leading support, Vaddio products enhance any AV experience by elevating the science of communication with The Art of Easy.



Favorite Screen Brand — Da-Lite
Favorite Mount Brand — Chief



av university



ONLINE TRAINING COURSES

AV University is home to C2G, Chief, Da-Lite, Luxul, Middle Atlantic, and Vaddio training courses. All courses are free and many offer CTS Renewal Unit credits. Our wide variety of course options include product certifications, installation tips & tricks, how-to-videos, application specifics, general industry knowledge and much more.

The program allows you to pick and choose your courses to help you create exceptional AV experiences every day. You can learn on your own time, at your own pace.

TO REGISTER FOR COURSES GO TO: www.legrandav.com/training

C2G.

WE BELIEVE IN THE PRODUCTS WE MAKE

With over four decades of experience and 4,000+ products built for seamless connections, C2G delivers connectivity solutions with mission-critical quality.

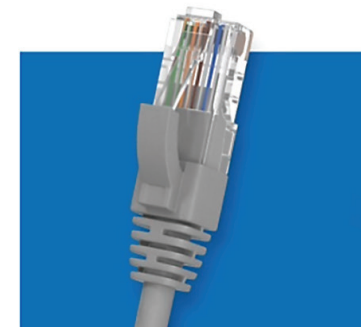
Our products are backed by warranty and come with a lifetime of free support from our team of experts.



HDMI SOLUTIONS



TYPE-C & USB SOLUTIONS



ETHERNET CABLES

PERFORMANCE SERIES HDMI CABLES

Designed to exceed the highest measure of HDMI performance and will enhance video experiences with higher resolutions, increased speeds, and sharper images. They include integrated finger grips on the top, bottom, and sides, for easy insertion and removal, and the gripping connector shell has 2x greater port retention to keep your devices connected. The gold-plated connectors on the cable allow for better shielding, increased electrical conductivity, and durability.



ULTRA HIGH SPEED HDMI® CABLE WITH ETHERNET - 8K 60HZ

Support a super immersive viewing experience with resolutions up to 8K. Ultra-fast motion images from fast-action videos, gaming, and VR applications are crisp and sharp with the 4K 120hz capability. Other resolutions are also supported, including 5K and 10K for commercial AV, industrial, and specialty usages. The 48Gbps bandwidth allows higher resolutions, faster refresh rates, and enhanced audio and media features.

C2G10456

12ft (3.7m) C2G Performance Series Ultra High Speed HDMI Cable with Ethernet - 8K 60Hz



PREMIUM CERTIFIED HDMI CABLES

Tested to conform with the Premium HDMI Cable Certification Program to ensure quality for feature-rich 4K/Ultra-HD content. Ideal for Digital Signage and Commercial Applications

C2G50196

125ft (7.6m) C2G Performance Series Premium High Speed HDMI Cable - 4K 60Hz In-Wall, CMG (FT4) Rated



ULTRA FLEX HDMI® CABLES

Ideal solution for in-rack, in-wall, or short connections on a conference room table or lectern. The CMG/FT4-rated jacket meets the highest standard required for in-wall installation and the ¼ inch (6.5mm) minimum bend radius makes these cables perfect for installations in any tight space or high-density environment.

C2G10384

50ft (15.2m) C2G Performance Series Ultra Flexible Active High Speed HDMI Cable - 4K 60Hz In-Wall, CMG (FT4) Rated



HDMI® ACTIVE OPTICAL COPPER (AOC) CABLES

Perfect solution for extending HDMI signals in large venues requiring high speed HDMI features and video resolutions up to 4K (4096 x 2160) at 60Hz. The cable's fiber strand construction reduces the risk of EMI/RFI, making performance stable when used in high interference environments such as data centers, surgical theaters, or manufacturing facilities where high resolution and consistent displays are critical.

C2G41491

300ft (91.4m) C2G Performance Series High Speed HDMI Active Optical Cable (AOC) - 4K 60Hz Plenum Rated



THUNDERBOLT™ 4 USB-C® 10-IN1 DUAL DISPLAY DOCKING STATION

Support crisp, ultra high definition images and video when connected to a single 8K display or dual 4K displays and provides data transfer speeds up to 40Gbps, all through the available Thunderbolt 4 ports. The front USB-A 2.0 port supports BC 1.2 for quick mobile device charging, while the three USB-A Gen 2 ports on the rear support 10Gbps data transfers. The Ethernet port allows for reliable internet connectivity with file transfer speeds up to 1000Mbps. Access multimedia content quickly with the SD 4.0 card reader that supports all SD cards, including SD, SDHC, and SDXC.

C2G54537



THUNDERBOLT™ 4 USB-C® CABLE (40GBPS)

Brings lightning-speed data transfers, 4K video support, and power delivery up to 100W.

C2G28886
(0.8m) Thunderbolt™ 4 USB-C® Cable



CONFERENCE ROOM VIDEO HUB - USB-C® AND HDMI®

A perfect addition to display and share 4K content in conference rooms and huddle spaces, allowing multiple users to connect and switch between their laptops and tablets – all over a single HDMI cable connected to the display.

CG84310



1-PORT USB-C® EXTENDER TRANSMITTER TO RECEIVER KIT - USB 3.2 GEN 1 (5GBPS)

A perfect solution for classrooms, conference rooms, and huddle spaces needing an innovative yet powerful solution for extending USB signals beyond their native 16.4-foot length limitation.

C2G54278



2-PORT HDMI® DISTRIBUTION AMPLIFIER SPLITTER

A 1-Input 2-Output splitter supporting up to 4K (4096 x 2160 at 30hz, 4:4:4) video, ideal for applications utilizing the HDMI 1.4 standard. A perfect solution for connecting a computer, Blu-ray™ player, gaming console, media server, or A/V receiver to two HDMI displays.

C2G41057



HDMI® HDBASET 3.0 KIT USB-B TO A + RS232 OVER CAT EXTENDER BOX TX TO BOX RX (18GBPS) 4K 60HZ

Extend a 4K HDMI source up to 328ft to a 4K display without signal loss using a single Cat6a Ethernet cable. This is an ideal solution where USB must also be extended alongside HDMI video and audio to interactive whiteboards and displays or in any installation that goes far beyond the length limitations of standard HDMI and USB cabling.

C2G30055



HDMI ADAPTER STYLE & DONGLE STYLE RINGS

The Patent Pending HDMI Adapter Rings from C2G are the perfect addition to conference rooms, huddle spaces, lecture halls or classrooms to make sure that anyone can connect. Available in three different configurations, the C2G HDMI Adapter Rings provide ultimate flexibility to fit the needs of any space.

29890

Retractable Universal Mount 4K HDMI Adapter Ring with Color Coded Mini DisplayPort, DisplayPort, USB-C, and Lightning



USB-C TO DISPLAYPORT™ ADAPTER CABLE 4K 30HZ - BLACK

Allow for a direct connection of a USB-C enabled laptop or device to a DisplayPort input on a projector or display.

C2G26901

3ft (0.9m) USB-C to DisplayPort™ Adapter Cable 4K 30Hz - Black

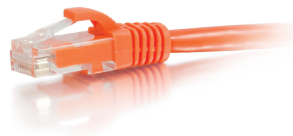


CAT6A SNAGLESS SHIELDED (STP) ETHERNET NETWORK PATCH CABLE

Protect a high speed network from noise and electromagnetic interference. Handle bandwidth-intensive applications and drastically reduces both impedance and structural return loss (SRL). Each patch cable is fully tested to meet ANSI/TIA 568 C.2 Cat6 component requirements.

C2G54278

(1.2m) Cat6 Snagless Shielded (STP) Ethernet Network Patch Cable - Yellow

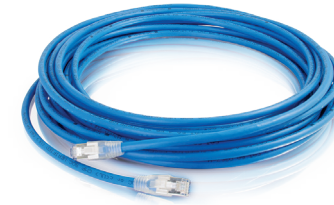


CAT6A SNAGLESS UNSHIELDED (UTP) ETHERNET NETWORK PATCH CABLE

Ideal for use with 10GBase-T ports and equipment, such as network adapters, hubs, switches, routers, DSL/cable modems and patch panels, and enables 10 Gigabit data transmission over a 4 pair copper cable allowing connections up to 100.

C2G50853

50ft (15.2m) Cat6a Snagless Unshielded (UTP) Ethernet Network Patch Cable - Orange



HDBASET CERTIFIED CAT6A CABLE WITH DISCONTINUOUS SHIELDING - PLENUM CMP-RATED

Discontinuous metallic shielding elements surrounding the inner 4-pair core of the cable. Attenuate both electromagnetic and potentially interfering electromagnetic signals. The metallic shielding elements are designed to be discontinuous to avoid any need for grounding, which is required for shielded cable designs, and have been shown to provide superior Alien Crosstalk performance compared to conventionally designed Category 6A UTP cables.

C2G43178

(91.4m) HDBaseT Certified Cat6a Cable



CAT6A SNAGLESS UNSHIELDED (UTP) SLIM ETHERNET NETWORK PATCH CABLE

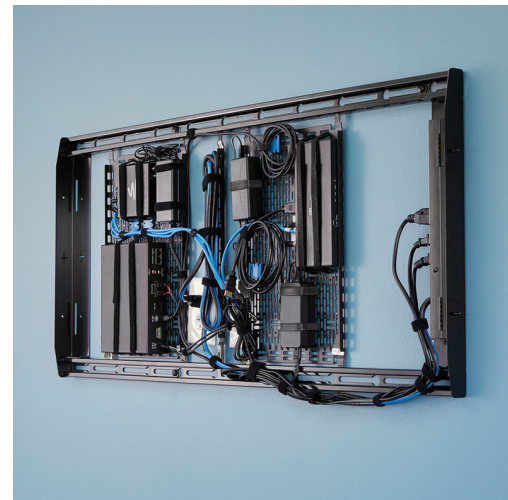
Perfect solution for high density cabling applications such as large conference rooms and data centers. The molded, snagless boot prevents unwanted cable snags during installation and provides extra strain relief.

C2G30194

25ft (7.6m) Cat6a Snagless Unshielded (UTP) Slim Ethernet Network Patch Cable - Purple



TEMPO™ FLAT PANEL WALL MOUNT SYSTEM



This all-in-one configurable wall mounting system is designed to improve efficiency by streamlining installation workflow. AV professionals can increase productivity and add money to the bottom line with this new system, especially for mass rollouts. Install on any wall and neatly store AV devices with simple, unparalleled service access. Install 2-6 small devices behind the display on integrated Lever Lock™ storage panels. Tempo Wall Mount System is thoughtfully designed with feedback from installers for faster deployments.

AS3LD
Tempo Flat Panel Wall Mount System without PDU

THE IMPACT™ SERIES KIOSK BRINGS FLEXIBILITY TO THE DIGITAL SIGNAGE ENCLOSURE MARKET WHILE MAINTAINING A SLEEK AESTHETIC TO COMPLEMENT A VARIETY OF ENVIRONMENTS.



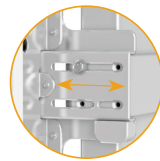
SERVICABILITY



KEYED LOCKING



CABLE PATHWAYS



UNIVERSAL DESIGN

DEPTH
ADJUSTMENT

KIOSK LATCH



LEVER LOCK™

VENTILATION
LOUVERS

- A depth-adjustable exterior frame allows for a variety of displays to be used.
- Reversible hinges help to avoid installation and service obstructions, and the exclusive design keeps the display mounted to the frame when opened, providing unparalleled service and maintenance access.
- Integrated wall reveal compensates for uneven walls to keep the frame plumb and provides passive cooling
- Large empty center backing enables use with in-wall boxes
- Internal knockouts for electrical junction boxes and 2RU rack spaces
- UL Listed
- Compatible with PAC525 and PAC526 series in-wall boxes
- Middle Atlantic's Lever Lock™ small device mounting system is integrated to easily mount small devices
- Custom colors, logos and protective glass can be special ordered



IMPACT SERIES FLOOR MOUNTED KIOSK

Offer freestanding base accessories preserve floor finishes, and accommodate movement of kiosks in temporary installations. Bases are offered in single-sided and backto-back configurations. Tested and approved to UL 2442 ensuring safety for interactive use and servicing.

Supports 40" to 55" display



IMPACT SERIES PORTRAIT WALL MOUNTED KIOSKS

A depth-adjustable exterior frame allows for a variety of displays to be used.

Supports 40" to 75" displays



IMPACT™ OUTDOOR KIOSK

Feature outdoor rated paint, wind tested up to 225km/h, and has convenient AV device storage that is IP54 rated to endure harsh outdoor conditions.

Supports 49" LG XE4F-M Series, 55" LG XE4F-M Series and 55" Samsung OHF/A Series displays



IMPACT™ LANDSCAPE ON-WALL KIOSK

Include a scissor arm extension providing unparalleled service and maintenance access by extending the display up to 8" (203 mm) from the wall.

Supports 49" to 55" displays



CONNEXSYS™ VIDEO WALL LANDSCAPE MOUNTING SYSTEM

Designed to solve common video wall challenges of speed, alignment, serviceability and rigidity. The ConnexSys™ Video Wall Mounting System provides the ability to level each row once by using strut channel to connect multiple mounts together with a simple-to-install system that can handle the largest requirements.

LVS1U

ConnexSys Video Wall Landscape Mounting System with Rails

LVS1UP

ConnexSys Video Wall Portrait Mounting System with Rails

LVSXU

ConnexSys Video Wall Landscape Mounting System without Rails

LVSXUP

ConnexSys Video Wall Portrait Mounting System without Rails





FUSION® MICRO-ADJUSTABLE FIXED AND TILT WALL MOUNTS

Designed with installer feedback for superior speed and usability. Stability, less hardware, fast installation, improved cable management and more great features add up to benefits installers appreciate in our best wall mount yet. Accessories are available to customize any configuration.



LSM1U
Large Fusion® Micro-Adjustable Fixed Wall Display Mount



LTM1U
Large Fusion® Micro-Adjustable Tilt Wall Mount



MTMP1U
Medium Fusion® Micro-Adjustable Portrait Tilt Wall Mount



**FLOOR-TO-CEILING
CABLE MOUNT**

Ideal for retail and quick service restaurants, Chief's Floor-to-Ceiling Cable Mount is a sleek solution that maximizes aesthetics while minimizing footprint. The mount supports large displays with a high weight capacity and allows perfect placement with post-installation pitch alignment.

The FCS1U supports both portrait and landscape orientations in a single SKU, with the option to retrofit a second, back-to-back display with the PACFCB accessory. To support reconfigurable installs, the PACFCL accessory provides easy lateral adjustment after installation and the ability to install multiple displays in-line with each other using standard channel strut.

FCS1U - FLOOR-TO-CEILING CABLE MOUNT
PACFCB - BACK-TO-BACK ACCESSORY

Weight Capacity: 100 lbs (58 kg)
Mounting Pattern: 200 x 200 - 862 x 517 mm

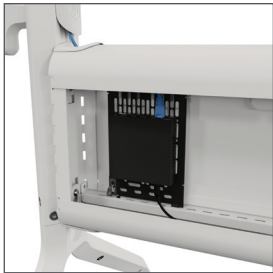




VOYAGER AV CART

Stylish Contemporary design meets robust construction in Chief's newest cart. Voyager is a mobile display solution to support flexible conferencing and collaboration in workspaces and digital signage applications.

Built-in cable management and small device storage create quick and attractive AV installations. Sleek handles and a stylish woodgrain shelf promote accessibility and effortless movement.





FUSION SERIES DYNAMIC HEIGHT ADJUSTABLE MOUNTS

Chief's line of height adjustable display mounts is expanding to include electric solutions. The new cart, floor-support and wall mounts have higher weight capacities to support larger interactive displays, and also give an option to users who may prefer an electric solution over non-motorized.

ELECTRIC HEIGHT ADJUSTABLE MOUNTS - XL

Weight capacity up to 140 KG

- Mobile Cart - XPD1U- EU
- Floor-to-Wall Stand - XFD1U-EU
- Wall Mounted - XSD1U-EU



ELECTRIC HEIGHT ADJUSTABLE MOUNTS - LARGE

Weight capacity up to 90 KG

- Mobile Cart - LPE1U-EU
- Floor-to-Wall Stand - LFE1U-EU



DYNAMIC HEIGHT ADJUSTABLE MOUNTS - LARGE

Weight capacity 55-82 KG

- Mobile Cart - LPD1U
- Floor-to-Wall Stand - LFD1U
- Wall Mounted - LSD1U



DYNAMIC HEIGHT ADJUSTABLE MOUNTS - MEDIUM

Weight capacity 30-60 KG

- Mobile Cart - MPD1U
- Floor-to-Wall Stand - MFD1U
- Wall Mounted - MSD1U





ULTRAWIDE MICRO-ADJUSTABLE STATIC WALL MOUNT. EXTRA-LARGE KIT

Leverage Fusion® features to support displays with 21:9 aspect ratio and ultrawide mounting patterns (up to 1954 mm x 600 mm) in a secure, easy-to-install solution.

KITXWXSM1U



LARGE VENUE PROJECTOR MOUNTS AND ACCESSORIES

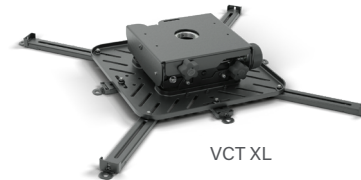
New projector mounts and accessories better align, protect and enhance large venue projection installations. Designed to install quickly while maintaining a sleek aesthetic.

VCT - XL PROJECTOR MOUNT

Weight Capacity: 150 lbs (68 kg)

Micro Roll / Pitch / Yaw: +/-5°, +/-20°, +/-10°

Macro Yaw: 360°





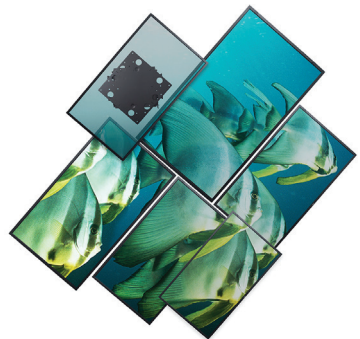
PROXIMITY™ COMPONENT STORAGE SLIDE-LOCK PANEL

Facilitate easy, concealed mounting of AV equipment behind displays. To simplify service and accessibility to the equipment simply slide the storage panel out. Install on wall or attach to Fusion® mounts* left, right, or below the display.

The built-in and tool-free 15" x 10" Lever Lock™ plate is easily removed and replaced from the slide-lock panel to service the equipment post-installation without touching the display. With a 15 lb. (6.8 kg) weight capacity, this storage panel will hold most small devices for AV installations.

CSSLP15x10

Proximity Component Storage Slide-Lock Panel



FREESTYLE FLAT PANEL ROTATION ADAPTER

Provide 90 degrees of rotation for 360 degrees of range, allowing designers to generate various video display wall configurations with ConnexSys™ or Fusion® mounts.

With Voyager mobile carts, it supports rotation from landscape to portrait orientation with rotating displays like MS Surface Hub and Samsung Flip.

FRA



FUSION® PULL OUT ACCESSORY

It can be used with any of the updated Fusion® micro-adjustable fixed and tilt wall mounts, including portrait models, to add up to 293 mm extension from the wall.

FCAV1U



FUSION® DISPLAY MOUNT ACCESSORY FOR LOGITECH® RALLY BAR, RALLY BAR MINI AND RALLY BAR HUDDLE

Can be mounted above or below typical 55" to 94" displays to best suit meeting and/or application needs!

FICALRB1

DA-LITE

ULTRAWIDE PROJECTION SCREENS



STRENGTHEN CONFERENCING PRODUCTIVITY, ENGAGEMENT AND INCLUSIVITY

Ultrawide format is quickly becoming the standard for displaying hybrid video conferencing solutions, where all attendees, whether they are in person or virtual, are equitably seen and heard.

Da-Lite offers a complete line of electric and fixed frame screens in 21:9 Ultrawide Format standard part numbers.

TENSIONED ADVANTAGE WITH SIGHTLINE

TENSIONED CONTOUR

CINEMA CONTOUR

UTB CONTOUR

PARALLAX



Instead of the traditional black drop, screens with SightLine are suspended by slim, sleek cables that help preserve the architecture of the space. The screen virtually floats in the room and completely disappears when not in use.

SightLine is now available with Tensioned Advantage and Advantage Electric Projector Screens.





TENSIONED ADVANTAGE

The Tensioned Advantage® ceiling recessed electric screen series is designed with ceiling trim in place, to conceal the rough opening eliminating the need to complete additional trim work once the screen is installed. Its two-stage installation option affords the screen case to be installed during the rough-in construction stage, and the screen surface assembly during the finishing stage.



WIRELINE ADVANTAGE

Designed for large venues, the Wireline uses thin steel cables up to 29 feet instead of black drop to lower the screen to an appropriate viewing height for a clean, aesthetically pleasing presentation. Feature simple in-ceiling installation with sliding brackets and ceiling trim built into the housing.



PARALLAX THIN

Ships already assembled with a thin-bezeled frame. The ambient light-rejecting technology features a micro-layered optical lens system that rejects light. This technology mimics the look of a television when it is on and when it is off, but without the glare from windows or lighting fixtures. With extremely wide viewing angles, no speckle and no glare, the surface is ideal for applications in Pro AV as well as Home Theater.



FAST-FOLD DELUXE

The enhanced Fast-Fold® Deluxe Screen System accommodates all skill levels with intuitive set-up and tear-down for rental and staging applications. Its efficient, portable design features a new leg-to-frame locking mechanism with no parts to lose. Now available with HD Rental – a foldable and optically enhanced screen surface for high definition AV experiences, featuring RF (radio frequency) welded binding for improved aesthetics and durability.



FULLVISION

A borderless screen with a modern aesthetic that blends into its environment when not in use, FullVision is a fixed frame projection screen that enables the entire surface to be used for projection. Modern and low-profile, FullVision is 16K-ready and future proof with HD Progressive surface options. Aesthetic design for rooms that require the screen to blend into the environment when not in use and deliver the very best in projection when the projector turns on.



CINEMA CONTOUR

Feature a wider, more substantial frame as well as the latest technology in projection surfaces designed for 4K and Ultra HD to maximize the technology of your projector. The larger standard black frame gives the eye a point of reference and enhances contrast for film purists and aficionados. The Cinema Contour can be customized by frame, finish, size and surface.



HD PROGRESSIVE

HD Progressive projection surfaces are designed to perfectly reflect and preserve the image being projected for ProAV installations. This screen surface technology is designed for high-resolution and laser projection, creating the most crisp, clear image in the industry. Ensure a future proof install with 16K-ready surfaces.



HD PROGRESSIVE 0.9*
Half Angle: 85°
Viewing Angle: 170°
Gain: 0.9



HD PROGRESSIVE 0.6*
Half Angle: 85°
Viewing Angle: 170°
Gain: 0.6



HD PROGRESSIVE 1.1*
Half Angle: 85°
Viewing Angle: 150°
Gain: 1.1



HD PROGRESSIVE 1.1 CONTRAST*
Half Angle: 60°
Viewing Angle: 120°
Gain: 1.1



HD PROGRESSIVE 1.3*
Half Angle: 75°
Viewing Angle: 170°
Gain: 1.3



PARALLAX ALR - PREMIUM AMBIENT LIGHT REJECTING SCREEN

The Parallax surfaces series are designed to achieve optimal ambient light rejection for environments with uncontrolled ambient light. The result is a bright, crisp image without glare—no matter how much light is in the room.

Parallax Pure is Ideal for small-scale projects up to 5 feet high, 120" diagonal.

Parallax Stratos is Ideal for large-scale projects, available in sizes up to 16' high.

PARALLAX PURE 0.8
Viewing Angle: 170°
Vertical Half Angle: 17°
ALR: 96%
Standard throw projectors: 1.5:1 throw or greater

PARALLAX PURE 2.3
Viewing Angle: 46°
Vertical Half Angle: 15°
ALR: 96%
Standard throw projectors: 1.8:1 throw or greater

PARALLAX PURE UST 0.45
Viewing Angle: 1600°
Vertical Half Angle: 55°
ALR: 95%
Ultra-short throw projectors: 0.4:1 throw or less

PARALLAX STRATOS 1.0
Viewing Angle: 60°
Vertical Half Angle: 30°
ALR: 80%
Standard throw projectors: 1.0:1 throw or greater



LUXUL

NETWORK SWITCHES

FOR THE PRO AV INTEGRATOR

Luxul switches are designed to handle anything from a small conference room to the most demanding AV over IP installations. With a wide variety of switches available, complete with SFP/SFP+ modules for expansion, you're sure to find a switch that meets the needs of your application



LUXUL
A brand of Itegrated

SW-505-8P-R
12-Port/8 PoE+ Gigabit Managed Switch

LUXUL
A brand of Itegrated

SW-615-24P-R
24-Port PoE+ Gigabit Managed Switch



24-PORT GB POE+ L2 L3 MANAGED SWITCH W/ 4 SFP+

24 port PoE+ rear facing single space rackmount Gigabit switch with 4 SFP+ 10Gb ports (aggregable up to 40Gbps) and a total PoE power budget of 370W. Each of the SFP+ ports can be used alone or aggregated together to allow 20 or 40Gbps throughput to another switch. This L2/L3 switch with 128Gbps switching capacity provides VLAN, QoS and other powerful management features. Variable speed fans for quiet operation. ProWatch Integrated for support of remote monitoring and management.

- PoE Self-Healing with auto-recovery and power scheduling
- 24 PoE+ Gigabit Ports
- 370 Watt total PoE budget
- Rear-facing ports
- 4 SFP+ Ports
- Aggregable up to 40Gbps
- Rack Mountable

SW-615-24P-R-E

Easily Provide Wired Network Connectivity Anywhere in Your Home

Includes a 92-watt total power budget to also power network devices

SW-100-08P
8 Port PoE+ Compact Switch

- Indoor Camera
- Printer
- NAS Drive
- Access Point
- Computer
- Smart TV
- Outdoor Camera
- Game System
- Router



4 PORT / 8 PORT UNMANAGED POE+ SWITCH

A compact Gigabit PoE Plus switch that provides four PoE Plus capable ports of Gb Ethernet connectivity with a total power budget of 58 watts. It is an excellent choice for expanding your network when using PoE-enabled devices such as IP cameras, wireless access points, AV over IP devices, control panels and easily fits into the widest range of environments. The durable metal case includes rubber feet and keyhole features for surface mounting options.

- SW-100-04P - 4 Port Unmanaged PoE+ Switch
- SW-100-08P - 8 Port Unmanaged PoE+ Switch



5 PORT UNMANAGED POE+ SWITCH WITH POE PASSTHROUGH

A 5 port PoE Plus powered switch that is powered from a PoE Plus switch or injector powered uplink and provides an additional four ports of Gb Ethernet connectivity. One of the Gb Ethernet ports allows the powering of a PoE 802.3af device (pass through port) such as a camera, control system interface, or AV over IP receiver. The durable metal enclosure includes detachable wing brackets for mounting and attachable magnet feet for easy mounting to metal surfaces.

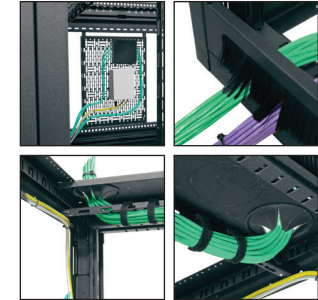
SW-100-05PD



MIDDLE
ATLANTIC

BGR SERIES RACK ENCLOSURE

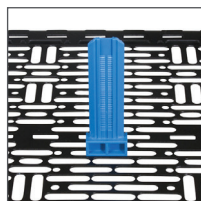
Deliver the most space efficiency and strength,
plus the latest options for installation flexibility
and seamless servicing.



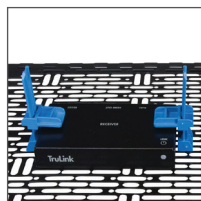
- All BGRs are now Forward Compatible and are equipped with the revolutionary Forward Rackrail, giving you the ability to use Forward blank panels, vent panels, horizontal cable management and vertical cable management
- More useable height than any rack – 45RU in less overall height than most 44RU racks
- Revolutionary, tool-free Lever Lock™ provides small device mounting and cable management without occupying a single RU
- Lightweight design with maximum weight capacity
- Configurable top with generous 53 cm wide opening and vertical cable management entry points
- Accepts brush grommet rear door kit for a large cable passage without fishing
- Problem-solving extender bays available
- Designed with built-in thermal management features



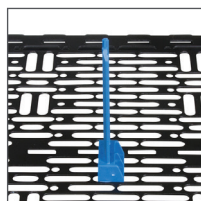
POP >



ZIP >



TWIST >



FORWARD FOR TODAY'S SYSTEMS AT TOMORROW'S SPEED

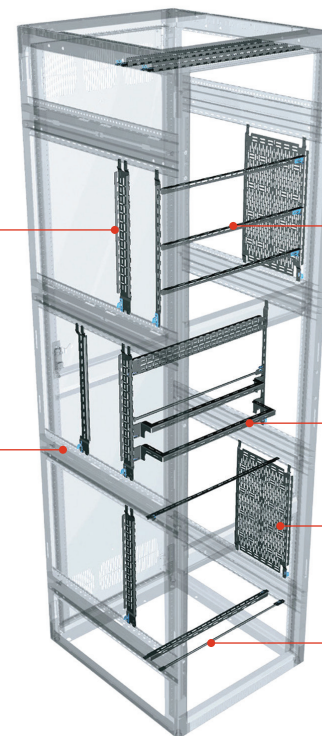
Enabling 5x faster installation of everyday rack builds so you can focus on what matters—delivering the ultimate AV experience. Redefined Rackrail for the fastest installation now included in all BGR enclosures. The threaded rail includes a square hole that unlocks the ability for all of our Forward panels, vents and cable management to be clicked in without using ANY rack screws!

ADDITIONAL FORWARD ACCESSORIES INCLUDE:

- Universal mounting pattern accommodates most small devices
- Locks in place without tools in Lever Lock compatible products
- Offered in a variety of sizes for vertical and horizontal mounting

Use vertical channels or angles to lace cable bundles from top to bottom

Designed to hold a wide range of standard DIN mount devices



Mount horizontal lacer bars between vertical Lever Lock accessories, or between rackrail brackets for strain relief and cable management

Offset lacer bars to relieve cable weight pressure on connections

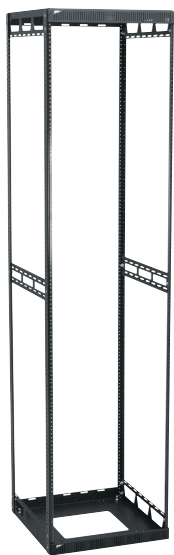
Vertical plates for small devices

Install horizontal Lever Lock lacer bars on any location on rackrail brackets to provide offset cable management

LEVER LOCK™

The patent-pending Lever Lock™ internal management system maximizes space utilization within a rack or furniture.

- Universal mounting pattern accommodates most small devices
- Locks in place without tools in Lever Lock compatible products
- Offered in a variety of sizes for vertical and horizontal mounting



SLIM 5 SERIES

Available in 12 standard sizes and any height from 8 to 43 spaces, the Slim 5 series ships ready-to-assemble. Strong steel construction with wide open access for easy integration.

- Lightweight, open design is easy to work with
- Bolt-together design allows for flat shipment via UPS
- Unique interlocking corner joint for exceptional strength and easy assembly
- Accepts optional removable steel side panels for security and control airflow
- Top includes two laser knockout locations to mount cooling fans
- Standard front and rear fixed 10-32 threaded rackrail with marked spaces



R4 SERIES 4-POST OPEN FRAME RACK

Mount networking, telephone, VOIP equipment, routers, switches and more. These racks are designed to accommodate deeper, heavier components than a two post frame rack. Two styles are available, one with 12-24 threaded rackrail, and one with cage nut rackrail.

- Open top accepts direct mounting of optional cable ladder
- Versatile base mounts inward to save space or outward for stability
- Rack gangs to additional 4-post or 2-post open frame racks
- Open frame design facilitates unrestricted air flow
- Sturdy construction from heavy gauge steel or aluminum (depending on model)
- Ships flat to save space
- Includes 100 pcs. of suitable fasteners
- Includes additional split rackrail to provide up to three mounting depths



ERK-KD SERIES

- Ready-to-assemble design allows for flat shipment
- Electrical knockouts on rear plates
- Laser-cut 1/8 thick internal steel braces for strength
- Standard front adjustable 10-32 threaded rackrail with numbered spaces
- Laser KO's in side panels for cable pass-through



SRSR-4 SERIES SLIDE OUT ROTATING RAIL SYSTEM RACK

Specify an SRSR for easy rear access to equipment connections in millwork, cabinets and flush in-wall installations. Available with a 19" or 23" useable depth, the SRSR system extends and rotates 90° in either direction, making it ideal for smaller systems.

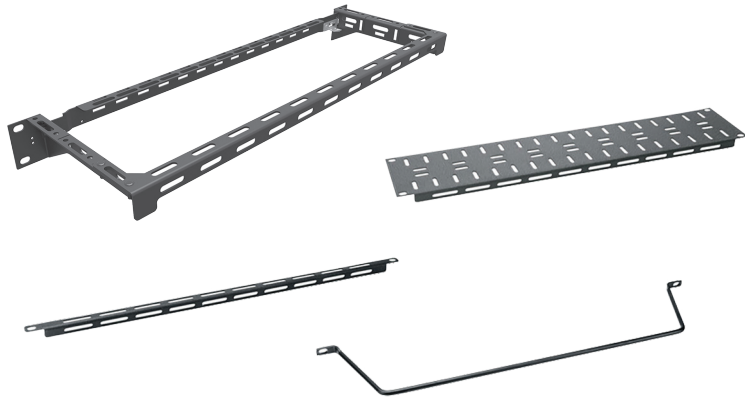
- Removable rack frame allows in-shop integration and on-site installation of equipment
- Locks in the extended position for simplified equipment integration
- Rotating equipment bay locks in place at 0°, 60° and 90° for easy installation and servicing
- Self-centering mounting base makes it simple to align system within cabinet opening
- Rear cable support works in conjunction with rear rackrail for effective cable management
- Standard front and rear 10-32 threaded rackrail with marked spaces



CFR SERIES CABINET FRAME RACK

CFR series low profile design maximizes usable rackspace in entertainment systems, cabinets and similar spaces. Strong, welded steel frame construction allows for pre-loading equipment and transportation to the installation site.

- Low profile design maximizes useable rackspace
- Strong welded frame allows for in-shop integration and on-site installation
- Includes two front-to-rear lacing bars for cable dressing
- Uprights feature offset cable tie areas



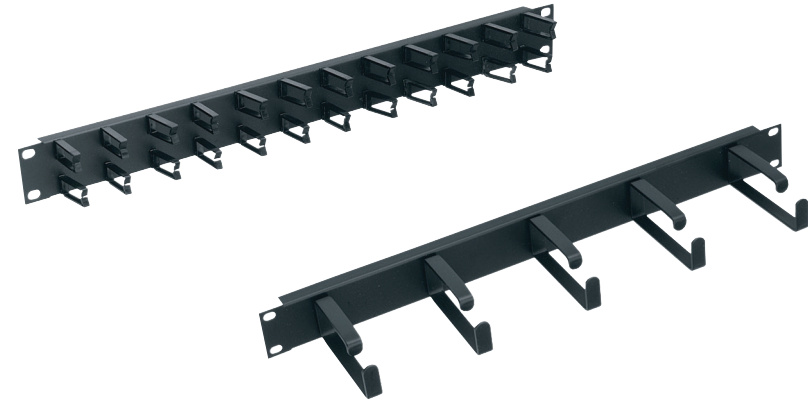
LBP SERIES HORIZONTAL LACER BAR SERIES

Horizontal lacer bars provide cabling support in the region of the mounted equipment itself, carrying cables horizontally from the sides of the rack to the connection points.

- Choice of round, rectangular, and "L" shaped profiles
- Choice of straight and offset styles
- Steel construction with black powder coat finish (except rectangular lacing bars of aluminum construction)
- Sold in packs of 10 pieces

LBP-2A

Lace Bar 2 Inch Offset, L-Shaped - 10 Pieces



HCM SERIES HORIZONTAL CABLE MANAGERS

Organize patch cords and similar cabling while maintaining the a required bend radius. Available in a wide variety of styles to suit most applications. Do not exceed a 50% fill rate for optimal performance when passing cables through cable rings.

- Choice of styles including "D-ring" and "micro-clip"
- Choice of one and two space sizes
- Steel construction with black powder coat finish

HCM-1D

1 RU D-Ring Horizontal Cable Manager



C3 SERIES CREDENZA

Meet the NEW 10" deep, ADA Compliant C3 Credenza. The C3 Series displays modern contrasted finishes, versatile storage options and integrated display mount options using Chief's Fusion™ technology for a truly all-in-one localized AV system.



L5 SERIES LECTERN

This lectern offers optional drawers for storage and/or housing a document camera with desired side placement flexibility or choice of a flip up shelf for extra surface space. Everything you need from a professional rack integrated into a professional lectern, ideal for a conferencing or education space. Thermal management, enough rack space, cable management, small device mounting and lever lock – everything integrated into a good-looking lectern that can be matched with your room design.



FORUM™ COLLABORATION SUITE

Designed for workspaces when hybrid collaboration is necessary in either open or closed spaces. The Display Stand – with a free-standing or floor-to-wall mounted version in Dark or Light design – includes a Chief Fusion mount that supports single displays up to a 100", dual displays up to 75" and 21:9 Ultra-Wide aspect ratio display, like the Jupiter Pana Series, up to 105".



VADDIO

EasyIP ECOSYSTEM

Vaddio EasyIP products are AV-over-IP systems that are easy to use, easy to install, and provide industry-leading video quality.

EasyIP saves money because our EasyIP cameras send video over IP, eliminating costly extenders and video switchers, and instead using Cat cables and a network switch.

This cost-effective solution results in faster installation times too, with all components being PoE powered.



 Dante

EASYIP ECOSYSTEM CONSISTS OF:

- A range of different camera options
- EasyIP Mixer and EasyIP Decoder for connecting your output devices
- TableMIC D and CeilingMIC D Dante microphones
- Dante Ceiling Speaker and Dante Amplifier
- EasyIP optimized PoE+ managed network switches
- Vaddio Device Controller and EasyIP PCC for easy control



EASYIP 20 CAMERA

Bring professional AV quality performance to the EasyIP Ecosystem, an AV-over-IP solution for lecture capture, remote learning and videoconferencing in large meeting rooms, lecture halls, and houses of worship. It delivers 1080p/60 resolution feeds to EasyIP endpoints and connects to a 1 GB PoE+ switch – eliminating the need for costly USB extensions. A local HDMI output allows for easy IMAG (image magnification).



EASYIP CEILING SPEAKER D

Optimized for easy installation and accurate voice reproduction. Ideal for conference rooms and classrooms.

- Dante networked audio
- 2-way speaker optimized for vocal clarity
- PoE+ powered



EASYIP 30 EPTZ

The EasyIP version of the popular IntelliSHOT auto-tracking camera will be available this summer. 30x zoom, auto framing/tracking and stunning image quality. Great for your medium to large meeting room and lecture capture.



EASYIP CEILING MIC/AMP D MICROPHONE

An in-ceiling audio solution with an overhead microphone and a built-in speaker amplifier, both featuring Dante networked audio.



EASYIP MIXER

Ideal for large classrooms and multi-camera applications, the EasyIP Mixer combines Dante audio sources and four Vaddio EasyIP cameras to deliver our easiest production switcher to date.



EASYIP TABLEMIC D MICROPHONE

Designed to reduce distracting noises that arise in the conference room, the microphone's solid metal base construction and engineered feet diminish table vibration noise that other table microphones experience.



INTELLISHOT-M PROFESSIONAL CAMERA

A professional auto-tracking camera Certified for Microsoft Teams. Advanced IntelliFrame™ technology makes the IntelliSHOT-M camera ideal for auto-tracking presenters in boardrooms or perfectly framing a group of coworkers in larger conference rooms. Pro AV Integrators can adjust the experience based on the room conditions and user's preferences. The IntelliSHOT-M camera provides a consistent, repeatable, and high-quality Microsoft Teams experience from Vaddio.



- Advanced Intelligent Framing algorithms keep your participants in view
- HD ePTZ camera with 30x zoom and up to 70.2 degree field of view
- USB 3.0 for seamless integration with Microsoft Teams Rooms
- Customizable autoframing experience



ROBOSHOT-30E-M PTZ PROFESSIONAL CAMERA

A leading long range zoom camera for videoconferencing Certified for Microsoft Teams. With an impressive 30x zoom, the RoboSHOT 30E-M PTZ Camera is ideal for larger conference rooms, training rooms and multi-purpose spaces. Designed for use with Microsoft Teams Rooms (MTR) systems.



- 30x zoom
- 1/2.5-type Exmor R CMOS sensor
- 70.2° horizontal field of view
- USB 3.0 for seamless integration with Microsoft Teams Rooms
- Remote IP Management



CONFERENCESHOT EPTZ CAMERA

Auto-framing camera for videoconferencing makes collaborating easy. Vaddio's ConferenceSHOT ePTZ delivers a dynamic, hands-free video experience that recreates the one-to-one videoconference experience perfect for hybrid working environments. The unique custom settings included with the camera make it ideal for enterprises that want professional-quality video for various meeting room environments.

- Intelligent Framing algorithms keep your participants in view
- 5x zoom with a 129° horizontal field of view
- Simultaneous USB 3.0, HDMI and H.264 IP Streaming (RTSP or RTMP)
- Integrated omnidirectional microphone with built-in Acoustic Echo Cancellation (AEC)
- Balanced audio line in and out
- Three custom settings for auto-framing sensitivity and ability to mask high-traffic areas from auto-framer



INTELLISHOT AUTO-TRACKING CAMERA

Equipped with advanced IntelliFrame™ technology, the IntelliSHOT ePTZ camera is the only auto-framing device that can be adjusted based on the room conditions and user's preferences.

- Advanced Intelligent Framing algorithms keep your participants in view
- 30x zoom with 70.2 degree field of view
- Simultaneous USB 3.0, HDMI and H.264 IP Streaming (RTSP or RTMP)
- Two integrated beamforming microphones with built-in Acoustic Echo Cancellation (AEC)
- Balanced audio line in and out



ROBOSHOT ELITE SERIES PROFESSIONAL PTZ CAMERAS

Designed with an 1/2.5 Type Exmor R CMOS sensor, RoboSHOT Elite cameras deliver striking, high-definition video image quality, plus more powerful image signal processing (ISP) – resulting in better light-gathering capabilities, incredible contrast and sharp 1080p/60 video, even in dim areas. Its advanced IntelliZoom™ Image Processing Technology (select models) lets you zoom greater distances without compromising image resolution.

- PoE+ powered
- 70.2° FOV, 8.5 MP, 12x & 30x zoom
- RTSP and RTMP streaming (RTMP on select models)
- Tri-Synchronous Motion technology for ultra-smooth, natural camera motion

AVAILABLE IN FIVE OUTPUT MODELS:
HDBT, HDMI, USB, SDI AND NDI

Also available as bundles with OneLINK extension systems



ROBOSHOT 20 UHD 4K PTZ CAMERA

Pristine image quality and outstanding low-light performance. Simultaneous 3 Gb/s HD-SDI, HDMI, HDBaseT, and IP (H.264) streaming. Recommended for large meeting rooms, lecture halls, and houses of worship.

- Back-illuminated 9.03 MP, UHD 1/2.3-type sensor delivers native 2160p/30 (3840 x 2160) video
- 74° FOV, 20x zoom
- Imaging and performance comparable to 3-chip cameras
- Precise pan and tilt movements from 0.35° to 120° per second
- Simultaneous HDMI, HDBT, HD-SDI and IP streaming outputs



DOCCAM 20 HDBT DOCUMENT CAMERA

With the high-definition resolution and 20x optical zoom, this document camera can be easily installed. Recessed in your ceiling with an easy, single-cable installation, the DocCam 20 HDBT is perfect for any office or school setting.



ROBOFLIP 30 HDBT PTZ CEILING CAMERA

Fully rotates into its enclosure when in standby mode, giving room occupants full assurance that video feeds are inactive.

Equipped with 30x optical zoom, the ceiling camera captures stunning high-definition video from greater distances. Ideal for corporate board rooms, law offices, courtrooms, and medical institutions where confidentiality is a high priority.



AV BRIDGE 2X1 PRESENTATION SWITCHER

Ideal for conferencing and lecture capture applications where two cameras are being used. AV Bridge 2x1 combines networked audio and video mixing functionality into a single device.

- Robust two HDMI input AV Bridge
- 4x4 Dante Audio matrix (12x12 cross-point audio matrix)
- Simultaneous 1080p USB 3.0, HDMI, and IP Streaming Outputs
- Flexible control options with serial, telnet, trigger, Vaddio Device Controller, and web control



AV BRIDGE MINI HD AUDIO/ VIDEO ENCODER

With AV Bridge Mini, you can bridge any high-definition HDMI and audio source into applications such as Skype for Business, Zoom and WebEx through its powerful USB 3.0 interface. Creating production-quality live streams has never been easier with the AV Bridge Mini's RTMP capabilities.

- Capture and streams content in a convenient, compact half-rack size
- HDMI input accepts 4k (2160p/30) signals and encodes and scales appropriately
- Outputs simultaneous USB 3.0 and IP streaming with up to 1080p quality
- Integrates with external DSPs by providing two balanced audio line inputs and output
- PoE powered – easily extends power and connectivity



AV BRIDGE NANO

A new addition to Vaddio AV Bridge family, the device is highly portable and cost-effective, making it ideal for IT professionals who need ease-to-deploy and reliable streaming and video capture. It retains some of the most popular qualities of the full-featured AV Bridge models while enabling streaming and video capture scenarios over USB or RTSP/RTMP without needing to purchase two separate devices.

- Converts an HDMI source into plug-and-play USB and IP connections for use in soft-conferencing or streaming software
- Single device capable of USB or IP streaming (up to 1080p/60 quality with USB 3.0)
- Compact size, portable and perfect for under-table or behind-display mounting
- Support uncompressed USB 3.0 and MJPEG compression on USB 2.0.



VADDIO DEVICE CONTROLLER

A 10-inch color touch panel designed to easily access and control Vaddio devices through their web-based user interfaces.

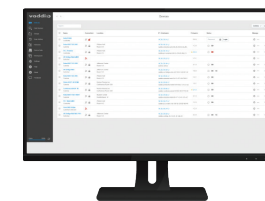
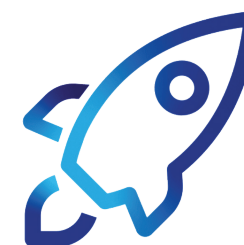
- Compatible with all Vaddio products with modern web-based user interfaces
- PoE powered for simple installation
- Commercial-grade steel tabletop mount with category cable routing



EASYIP PCC

A low-cost and ergonomic joystick for controlling up to four EasyIP cameras.

- Three-axis Hall effect joystick
- Precise PTZ and preset control of up to four EasyIP cameras
- Sleek, steel chassis with soft feet for stability on any surface
- HDMI output displays decoded IP stream video from the selected EasyIP camera



DEPLOYMENT TOOL

Simplify installations by viewing all your compatible Vaddio products across a deployment on one screen with the simple click of a button. The Vaddio Deployment Tool enables you to select devices from the network, choose an action like reboot the device, unmute the audio, or conduct mass firmware updates on hundreds of devices all at once, which saves you a lot of time.

Best of all, it's free. No licenses, no invoices, no maintenance fees. The Vaddio Deployment tool is for our valued integration partners and AV managers who rely on Vaddio products to keep their AV installations running smoothly.

DOWNLOAD AT: <https://info.legrandav.com/VaddioDeploymentTool>



AMAZING AV EXPERIENCES | legrandav.com

USA 866.977.3901 av.support@legrand.com CANADA 877.345.4329 av.support@legrand.com
 EMEA +31 495 580 840 av.emea.sales@legrand.com APAC +852 2145 4099 av.asia.sales@legrand.com

©2023 Legrand AV Inc. 230628 Rev A 8/23 C2G, Chief, Da-Lite, Luxul, Middle Atlantic, and Vaddio registered trademarks of Legrand AV Inc. All other brand names or marks are used for identification purposes and are trademarks of their respective owners. All patents are protected under existing designations. Other patents pending.

COMMERCIAL BRANDS
 C2G | Chief | Da-Lite | Luxul | Middle Atlantic | Vaddio